

MINUTES

Meeting of the Wongawilli Colliery Community Consultative Committee Tuesday, 05 February 2013

Held at Wongawilli Community Hall, West Dapto Road, Wongawilli

ATTENDANCE:

Col Gellatly	- Chairperson
Katrina McDonald	- Community Representative
Kevin Roots	- Community Representative
Peter Turner	- Community Representative
Ron Zwicker	- Wollongong City Council
Dave Clarkson	- Group Approvals Manager (NRE)
Chris Irving	- Environment & Community Manager (NRE)
Mat Campbell	- Environment and Community Relations Manager (NRE)
Blake Doering	- Environment Officer

Col Gellatly declared the meeting open at 6.40 pm.

Apologies Lois Burgess

MATTERS ARISING:

1. Best practice dust controls were investigated, NRE is doing all but one of these measures. Details provide in Company Presentation and on the website.
2. Compare Wongawilli with the Hunter Valley in relation to dust emissions and covering coal carriages was found to be difficult, due to the number and diversity of movements and train types the Hunter region has. It was asked if it was possible to compare like for like. NRE to investigate
3. Information regarding train horns was given and a request for a Rail representative to attend a future meeting.

COMPANY REPORTS AND OVERVIEW OF ACTIVITIES:

Group Approvals Manager – Dave Clarkson

Dave Clarkson gave a report as per the attached presentation and spoke generally about the LiDAR mapping of swamps which is now being ground truthed. Map also attached
Overview of LW layout in Elouera, Nebo and proposed Avon areas.

NRE is preparing a modification of the Part 3A to add NLW7 on the eastern edge of the Nebo area
NRE has spoken to DSC and require NRE to sample groundwater from a variety of depths between the Nebo Area and Upper Cordeaux No.2 reservoir.

Stage 2 Expansion Project-

Working on EA, detailed swamp mapping and heritage constraints assessment has commenced over proposed Avon LW1-6

Surface upgrade includes the extension of train line toward the west to allow longer trains to load from the coal bins, conveyor system modifications, powerlines and upgrade of the stockpile to 200k tons including a tripper conveyor and coal reclaim system.

Environment & Community Manager, Wongawilli – Chris Irving

Chris Irving gave a report as per the attached presentation.

Quite due to maintenance on the LW and limited train movements.

Self reported overflow of a dam due to heavy rain, discharge to be investigated by the EPA.

Nil Non Compliance

Nil Complaints

Agencies site inspection was carried out, feedback was good.

Ground water monitoring- comparisons were shown between swamp levels and rain falls.

Management plans resubmitted awaiting department review

Annual Environment Management Report submitted and placed on the website

COMMUNITY ISSUES:

Question- Rail Bridge works? What is happening with water in the creek underneath?

Answer- Emergency structural works being carried out and diversion of water flow in place. Detailed report to be provided to all members.

ACTIONS ARISING:

- Provide a report on rail bridge project
- Organise visit to the catchment area
- Rail person to attend next meeting if possible
- Biosis representative to attend next meeting if possible
- Investigate dust emissions- Possible like for like comparison
- Ground water monitoring update each meeting

NEXT MEETING:

The next meeting is to be held on Tuesday, 26th March 5pm.

The meeting closed at 8pm.

Attachments

- Copy of presentation that was made to the meeting.



NRE Wongawilli

Community Consultative Committee

5 February 2013

Agenda

- 1 Apologies
- 2 Declaration of interests
- 3 Correspondence
- 4 Previous matters arising
- 5 Company reports and overview of activities
- 6 Community issues
- 7 General business
- 8 Next meeting

Apologies



Declarations of Interest



Correspondence

- 26 October – Dave Clarkson sent information regarding the location of upland swamps above Wongawilli Longwalls to Peter Turner
- 27 November 2012 - Peter Turner emailed 1 query and 3 requests regarding subsidence impact monitoring on upland swamps

Previous Matters Arising

- Best practice controls to be investigated and a report provided to the next meeting.
- Report to be provided to compare Wongawilli with the Hunter Valley in relation to dust emissions and covering of coal carriages.
- Contact to be made with National Rail requesting information on use of the trains' horn and the possibility of inviting a representative to attend the next meeting.

Company Reports and Overview Of Activities

Approvals Overview

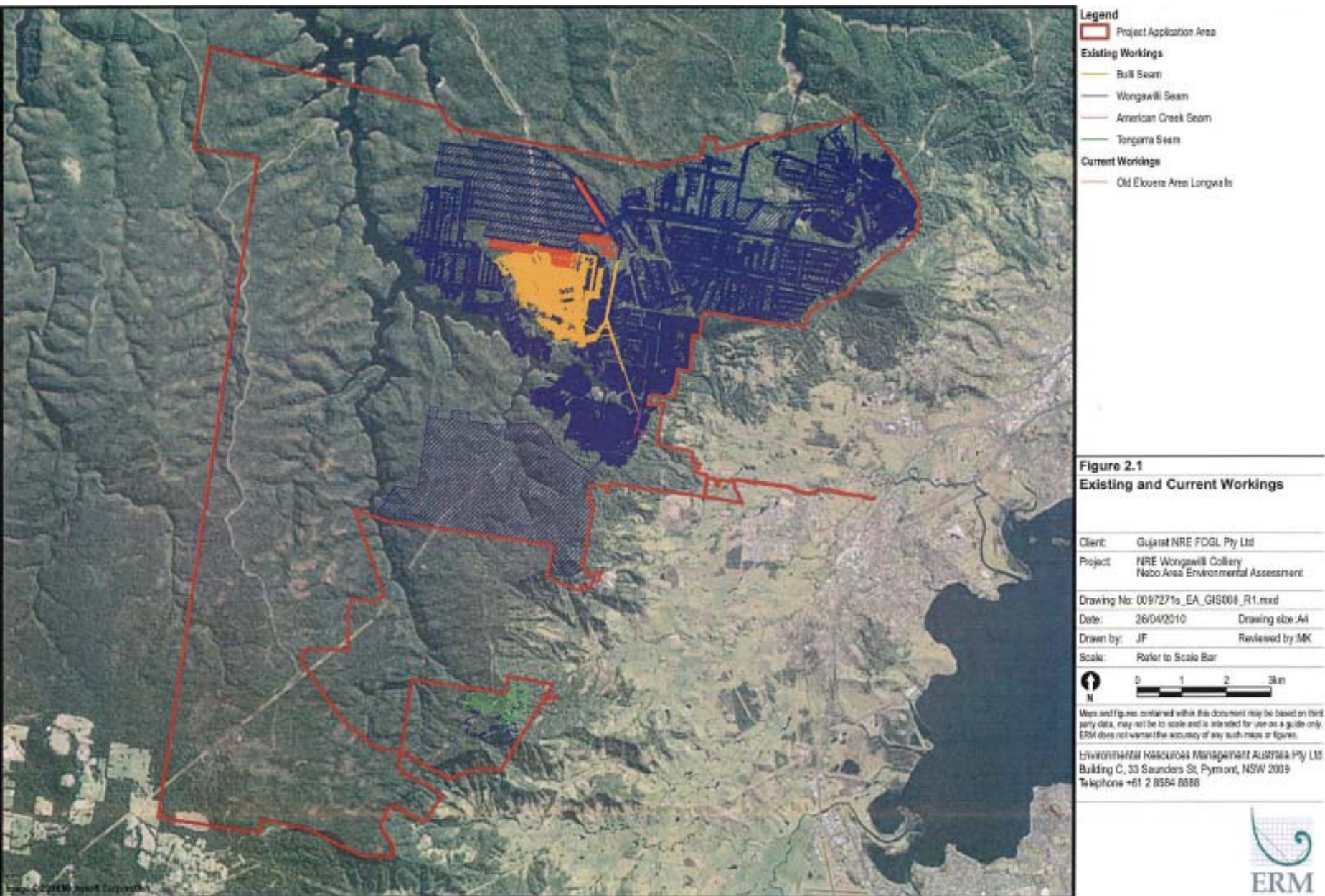
Environmental Management
Compliance

APPROVALS

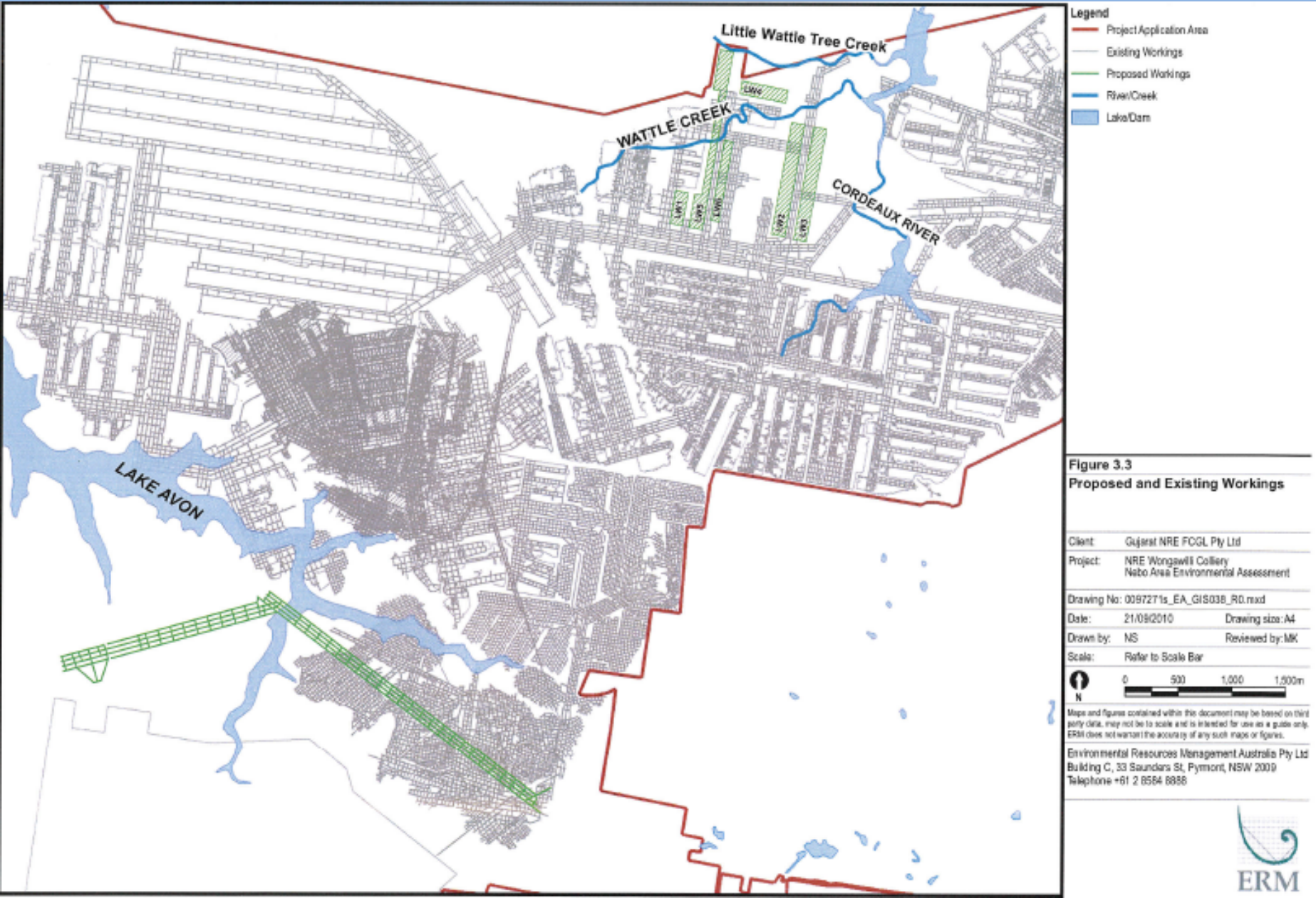
Nebo Extraction Plan/Subsidence Management Plan

- Planning approval of extraction of Nebo Longwalls 1-6 (LWN1-6) was part of Continuing Use Pt3A approval issued in November 2011.
- NRE also need Planning approval of an Extraction Plan for LWN1-6 as part of a condition of the Continuing Use Pt3A approval
- NRE also need a Subsidence Management Plan approval for the same extraction from Division of Resources and Energy (DRE). This is a requirement of NRE's Mining Lease.
- Both the Extraction Plan (EP) and Subsidence Management Plan (SMP) applications have been approved and the approval documents are on the NRE website.
- A final condition of the SMP approval requires approval of a Subsidence Monitoring Plan

APPROVALS



APPROVALS

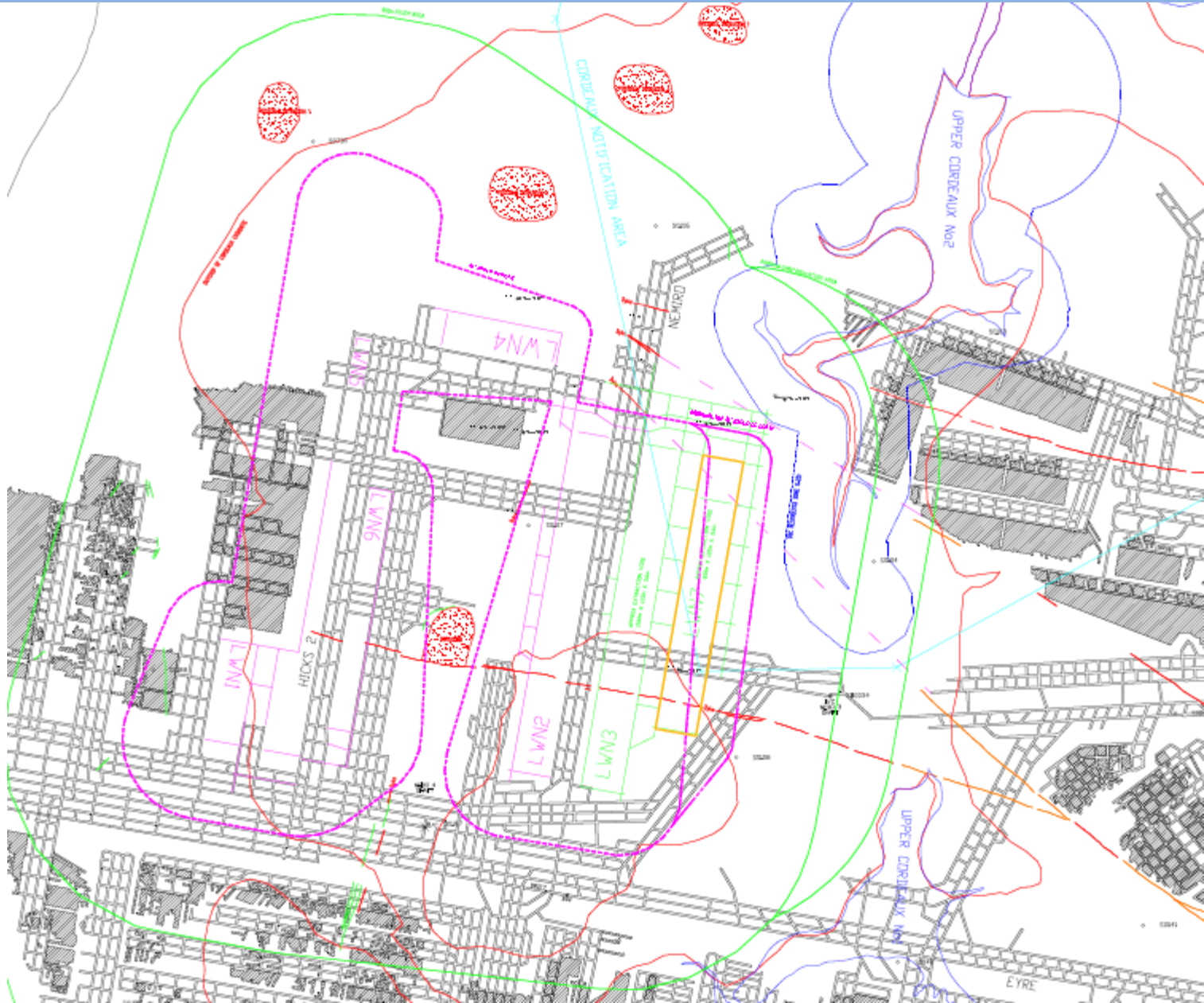


APPROVALS

Nebo Longwall N7

- An application to modify the Continuing Use Pt3A to allow the addition of an additional longwall is likely to be submitted to the Department of Planning mid 2013.
- It will add an additional longwall on the eastern side of the existing approved Nebo Longwalls 1 - 6
- NRE also need Planning approval to amend its approved Extraction Plan for the LWN1-6 to add LW7
- NRE also need Division of Resources and Energy (DRE) approval to amend its approved Subsidence Management Plan for Nebo LW 1-6 to add LW7.
- Applications to modify the Extraction Plan (EP) and Subsidence Management Plan (SMP) will be submitted in parallel with the Pt3A modification application to save time.

APPROVALS



APPROVALS

NRE Wongawilli Colliery Stage 2 Expansion Project

Purpose

The purpose of the application is:

- to gain approval to extract 6 longwalls in a new mine area in the Avon Domain (LWA1-6);
- to gain approval for an additional longwall known as LWN7 in the Nebo area
- to construct surface infrastructure to manage a proposed increase in coal production to 3 million tonnes per year from the current 1 million tonnes per year.
- to construct a new ventilation shaft

Application Progress

- A lead consultant, AECOM, has been engaged to manage the application for NRE and will work with the consultant preparing the Environmental Assessment for the ventilation shaft element of the proposal.
- NRE is still finalising the mine planning to inform the application
- It is currently anticipated that an application will be submitted to DoPI toward the in the third quarter of 2013.
- Its likely that the application will consist of a modification of NRE's current Continuing Use Pt3A approval for LWN7 and a new State Significant Development (SSD) for LWA1-6

APPROVALS



Conceptual Operational Layout

WONGAWILLI NO.2 VENTILATION SHAFT PROJECT

Legend

- Proposed Wongawilli No.2 Ventilation Shaft
- Service Roadholes
- One Way Access
- Fire Ranks
- Ring Main (Sprinkler System)
- 415V Power to Switch House
- 22kV Power to Switchyard
- 11kV Power to Roadholes
- Water Supply
- Service Easement
- 5m Contour (NRS)
- Proposed Longwall Layout (East Wing Only)

Operational Site Features (indicated below)

- Headpad (15m diameter)
- Headpad Final Approach Area (25m diameter)
- Headpad Safety Area (80m diameter)
- Access Road
- Carpark
- Diesel Storage Tank
- Shaft Top Area
- Sale Area
- Switch House
- Electric Compound (Diesel Generator)
- Switchyard
- Ring Main Pump
- Water Tanks (11m diameter)
- Potential Water Quality Pond Locations
- Disturbed Area (1.57 ha)
- Ventilation Shaft Fan Layout

FIGURE 4

Scale 1:1,600 (at A8)



Map Prepared by: Cardno
 Date: 28-10-2011
 Coordinate System: GDA - 861 MGA Zone 56
 Project: 100107-0
 Map: 100107-01 (as per final layout) - 1

Additional maps supplied by Ring Maps were used to develop this map.

Environmental Management Update

NRE Wongawilli Colliery Sep – Jan 2012/2013

- General
 - Currently no longwall mining
 - Anticipated move to Nebo Longwalls in March 2013
 - Currently limited train movements due to no longwall production
 - Exploration activities commenced for water monitoring borehole for Wonga South (Avon) Project
- Environmental Protection License Compliance Sep-Jan 2012/2013
 - Discharge of water from sediment Pond C that occurred on 29th January. Not on EPL Licence but self reported to EPA. Water sample taken and waiting on result. No environmental harm predicted to have occurred as water quality fair.
 - Pollution Incident Response Management Plan submitted – on website
 - PRP – Coal Mine Particulate Matter Control Best Practice submitted – on website
 - Monthly EPL Monitoring Report on website current for December 2012. Awaiting January analysis and will update.
 - Annual Return submitted for 30 November 2012 – no issues of concern raised by EPA
- Mining Operation Plan Compliance
 - Nil Non Compliance
 - 2011-2012 Annual Environmental Management Report submitted – on website
- MP 09_0161 Nebo Area Project Approval Compliance
 - Management Plans re-submitted – awaiting further feedback from Department of Planning.
 - Bushfire Management Plan under development by Cardno consultants – aim for submission 1 March 2013
 - Depositional Dust Sites along Rail Easement yet to be installed as per NRE Air Quality statement of commitment
 - Noise survey being finalised as per Schedule 4, Condition 7. Mitigation and monitoring actions to be developed based on report findings. Wilkinson Murray finalising. Due by June 2013.
 - Complaints Register being updated every month – on website

Environmental Management Update

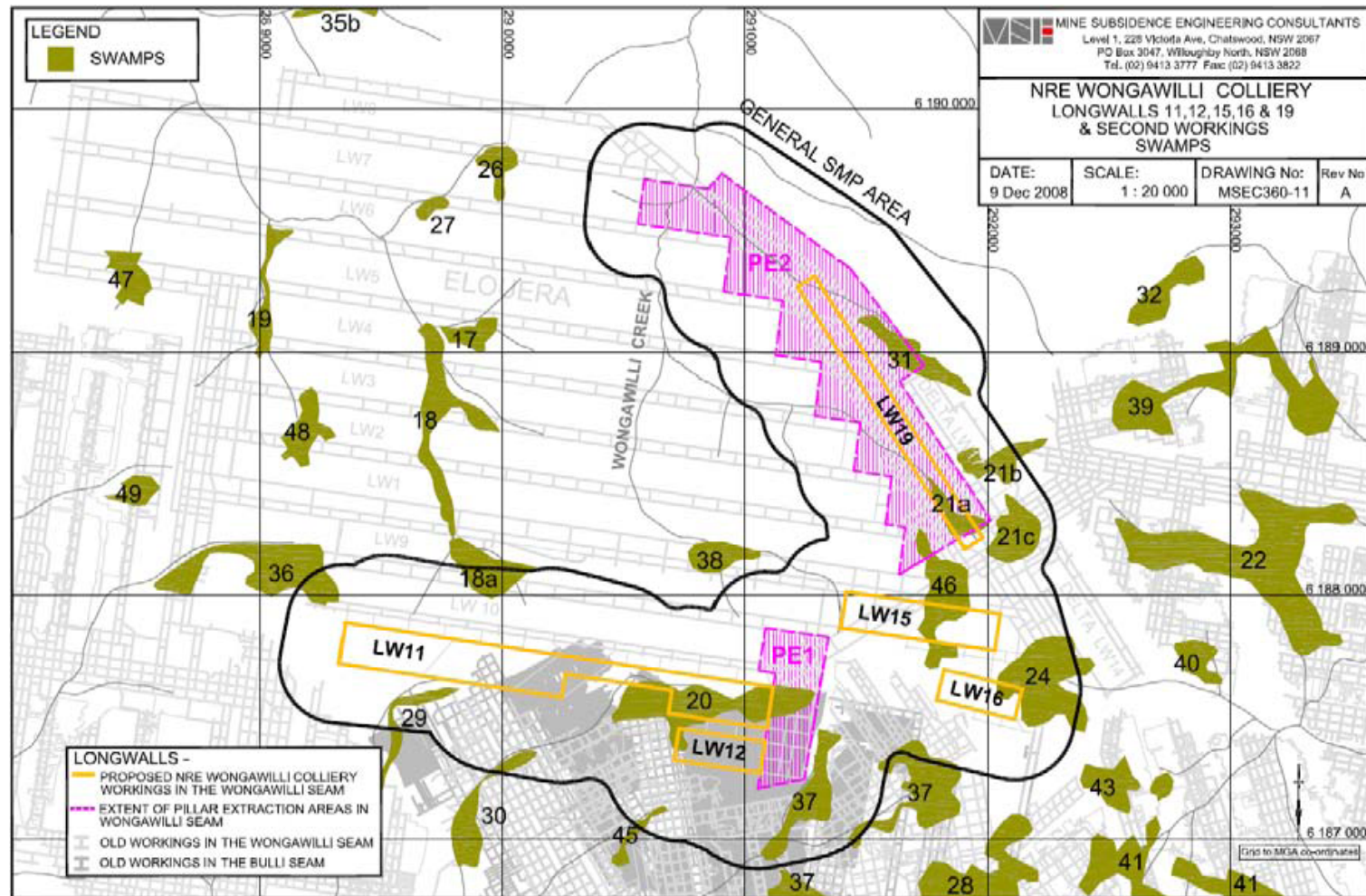
NRE Wongawilli Colliery Sep – Jan 2012/2013

- Subsidence Management Plan LW 11,12,15,16,19,20
 - LW 15 End of Panel Report due 6 March 2013
 - No subsidence management plan triggers exceeded during period
 - Quarterly Subsidence Management Status Report No.11 due 19 Feb 2012
- Subsidence Management Plan Nebo Longwalls N1-N6
 - Approved 25 January 2013 – approval to be distributed to all agencies within 30 days and will be placed on website. Extraction Plan approval from Department of planning received on 21 December 2013.
 - Subsidence Monitoring Programme being finalised.
 - 2 subsidence monitoring lines, 9 far field monitoring points and 3 stream level loggers need to be installed prior to extraction. Currently awaiting SCA REF approval.
- Complaints
 - No complaints received
- Projects
 - Games Council NSW Deer Control Program commenced 17 December 2012.
 - Mine Managers Cottage Project - no progress since last update.

Environmental Management Update

Upland Swamp Shallow Groundwater Monitoring

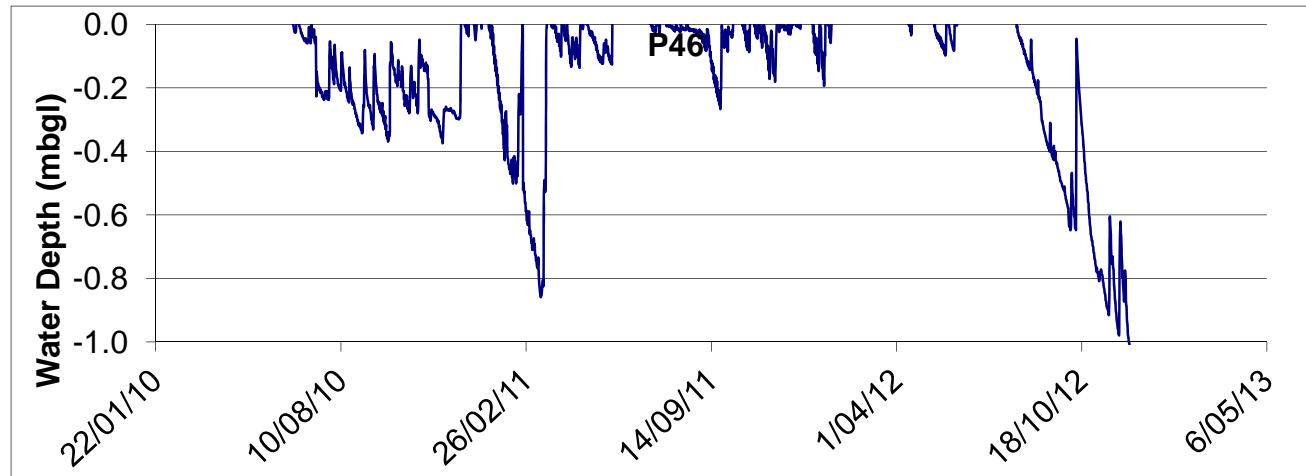
Upland Swamp Locations LWs 11-20



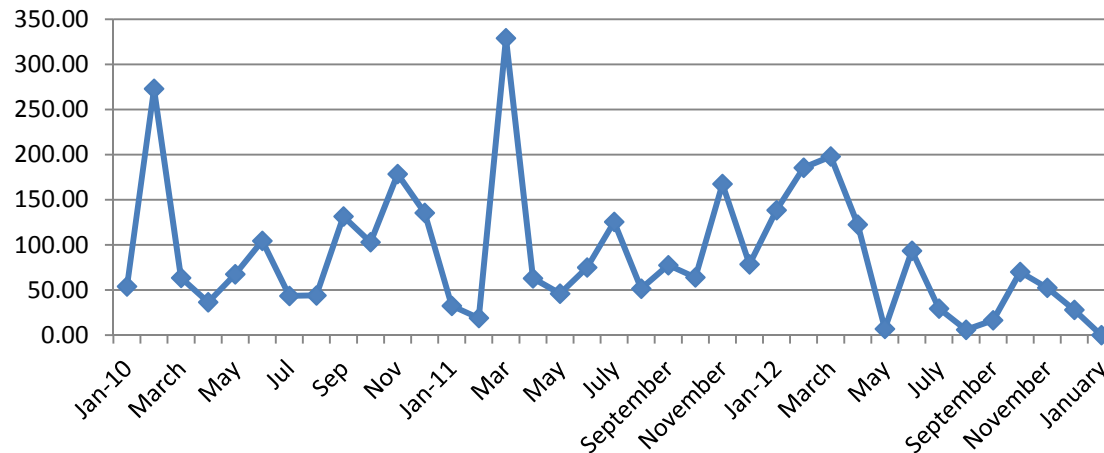
Environmental Management Update

Upland Swamp Shallow Groundwater Monitoring

Swamp 46 – Impacts Due to LW 15



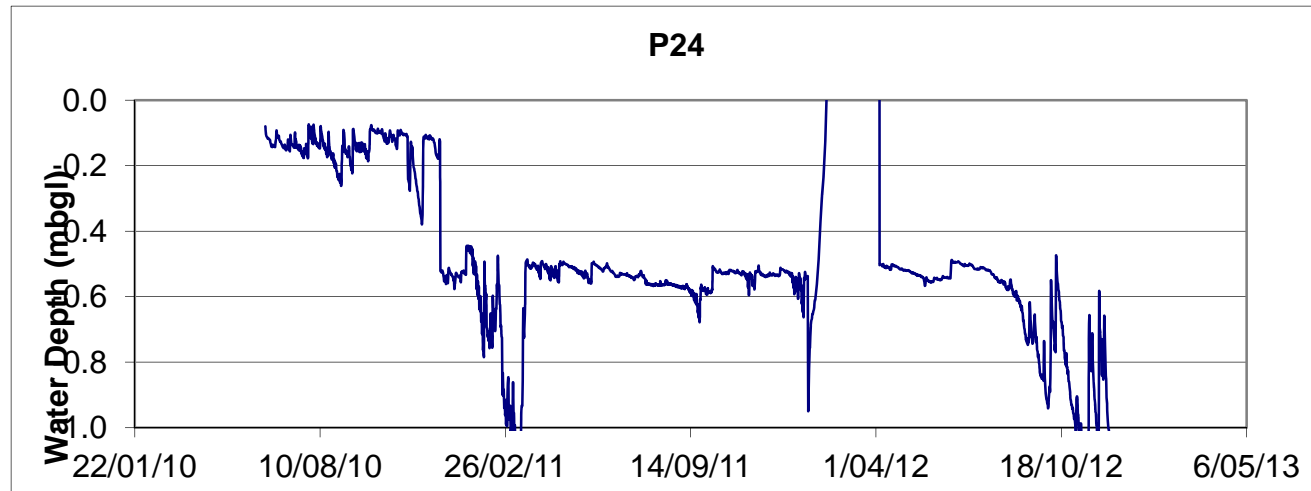
Total Monthly Rainfall (mm)



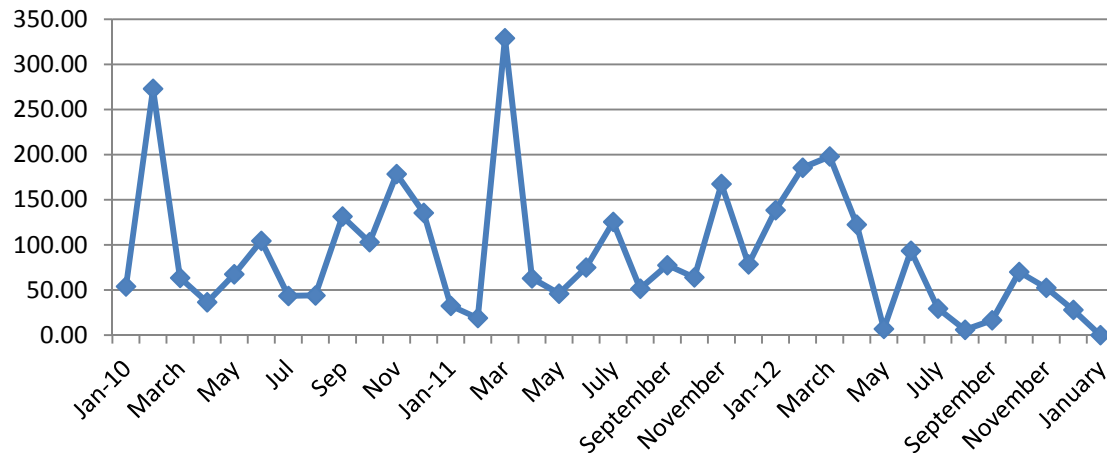
Environmental Management Update

Upland Swamp Shallow Groundwater Monitoring

Swamp 24 – Impacts Due to General Extraction



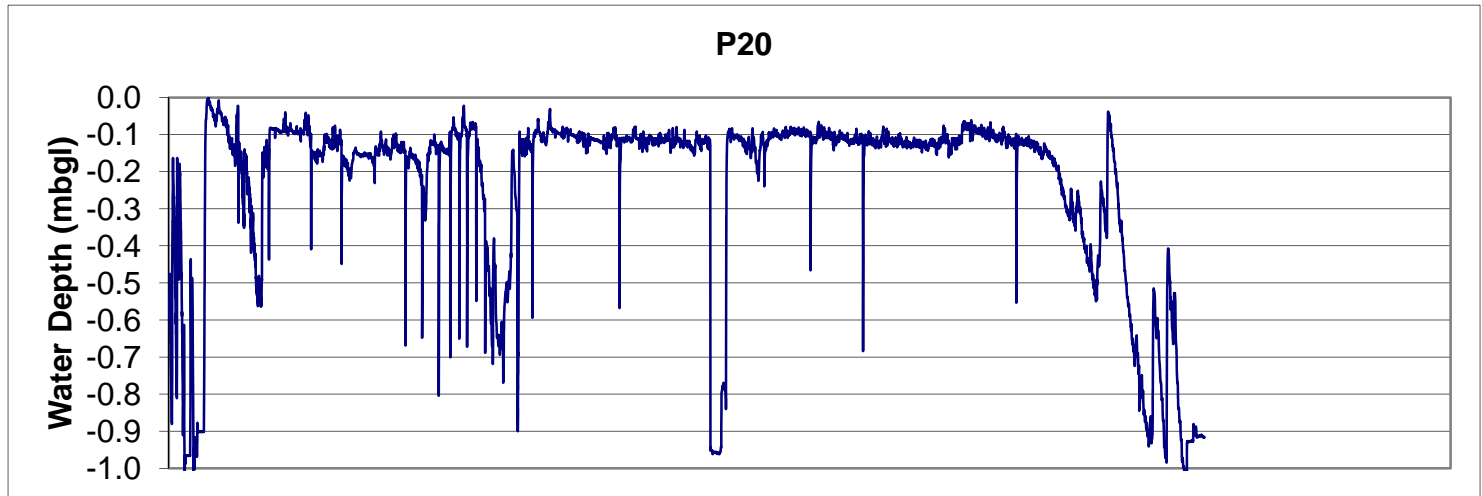
Total Monthly Rainfall (mm)



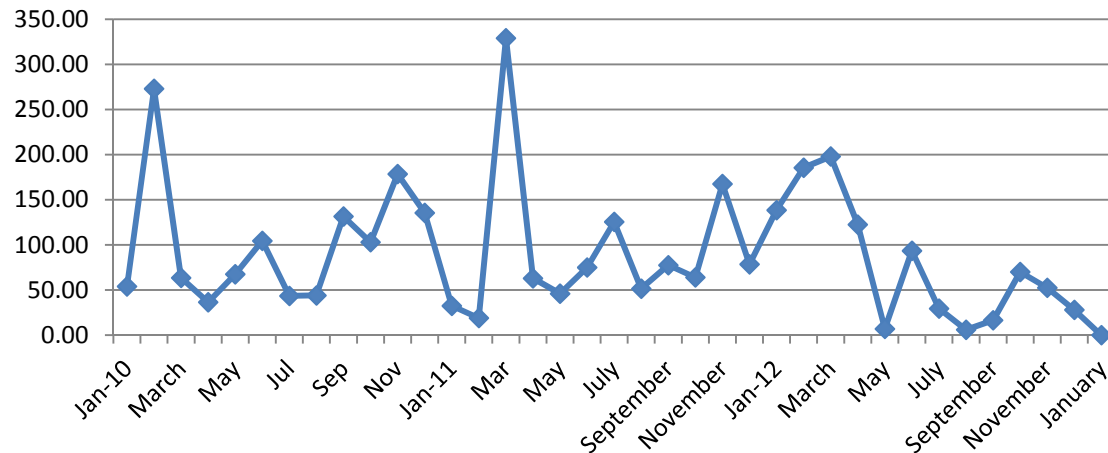
Environmental Management Update

Upland Swamp Shallow Groundwater Monitoring

Swamp 20 – Impacts Due LWs 11, 12 & 20



Total Monthly Rainfall (mm)



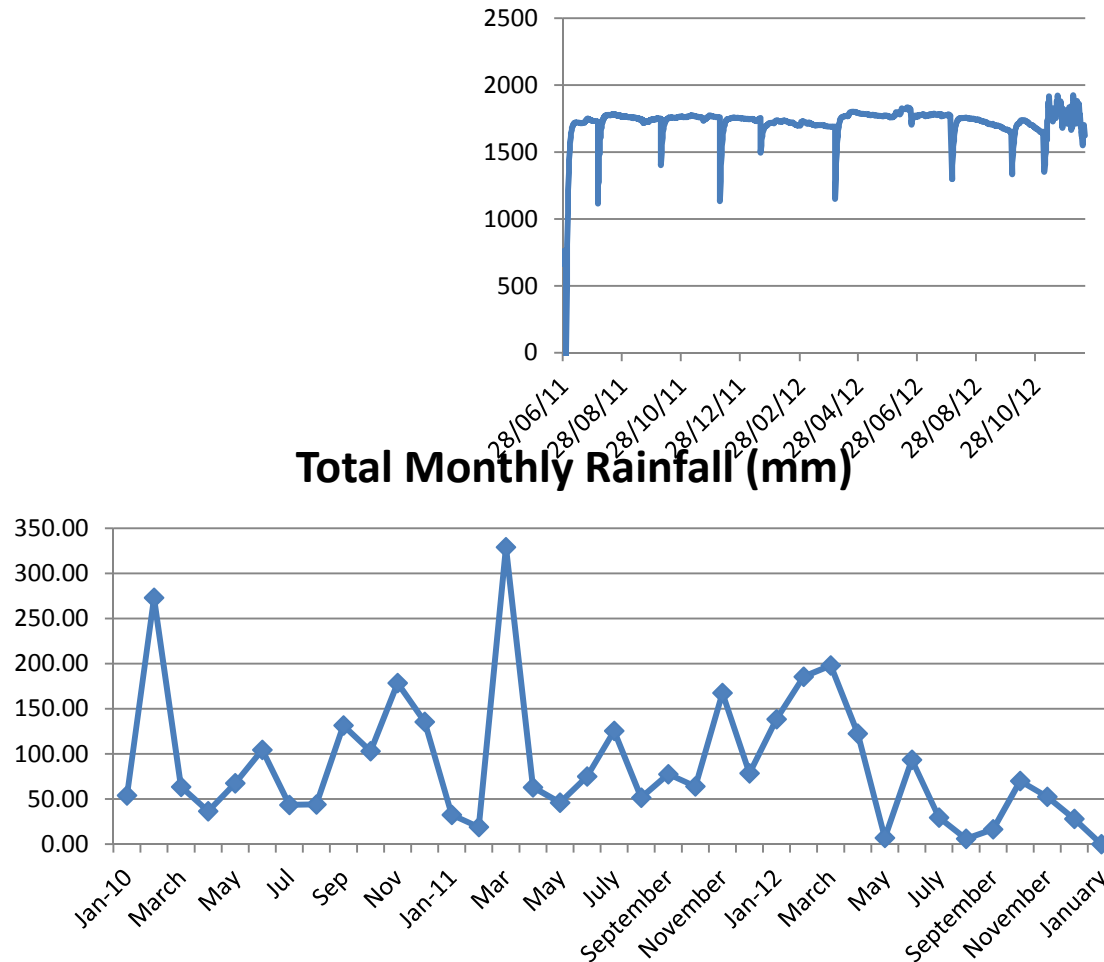
Environmental Management Update

Upland Swamp Shallow Groundwater Monitoring

Swamp 21a – Impacts Due LW 19

P21a

Total Monthly Rainfall (mm)

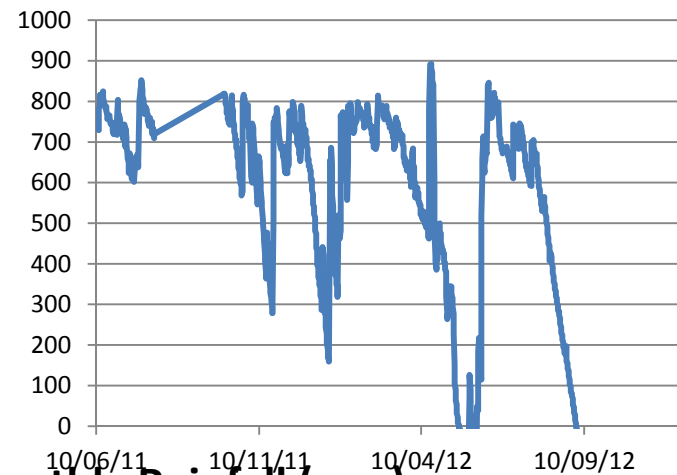


Environmental Management Update

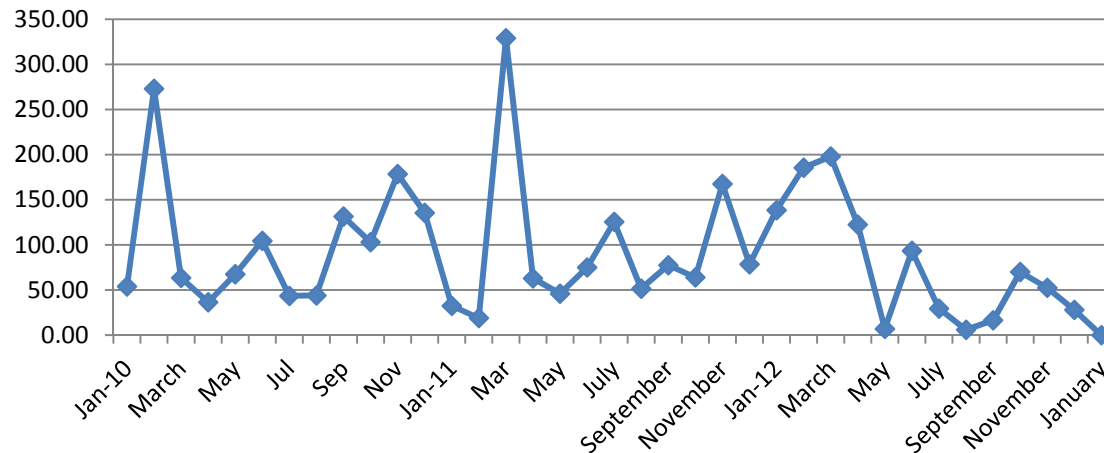
Upland Swamp Shallow Groundwater Monitoring

Swamp 31 – Impacts Due LW 19

P31



Total Monthly Rainfall (mm)



Environmental Management Update

Upland Swamp Shallow Groundwater Monitoring

Extraction Schedule LWs 11-20

LW12 – 25/8/2009 to 26/11/2009

LW11 – 1/2/2010 to 16/5/2011

LW19 – 26/6/2011 to 5/12/2011

LW20 – 18/12/2011 to 11/4/2012

LW15 – 24/5/2012 to 6/11/2012

Environmental Management Update

Upland Swamp Shallow Groundwater Monitoring

Location of LW 11,12,15,16,19 & 20 Swamp and Groundwater Monitoring Sites

Monitoring Site	Easting	Northing
GROUNDWATER PIEZOMETERS		
PWW1	291677	6187507
EGW2	289434	6188008
EGW3	289773	6187749
EGW4A	290122	6188359
EGW5	290538	6187861
EGW6	290453	6188065
UPLAND SWAMP PIEZOMETERS		
P20	291144	6187583
P21A	291860	6188293
P24	292076	6187585
P31	291867	6188897
P46	291875	6187988

Environmental Management Update

Upland Swamp Shallow Groundwater Monitoring

Location of Nebo Longwalls N1-N6 Swamp and Groundwater Monitoring Sites

Monitoring Site	Easting	Northing
GROUNDWATER PIEZOMETERS		
Nebo 6	295237	6189510
Nebo 7	295477	6189585
Nebo 8	294679	6189485
Nebo 8A	294549	6189499
PE1	291676	6187507
WW11	288343	6184339
WW20B	291099	6184158
OPEN GROUNDWATER STANDPIPES		
Nebo 1 (S)	295153	6188762
Nebo 1 (D)	295152	6188761
Nebo 2 (S)	294662	6189246
Nebo 2 (D)	294662	6189237
Nebo 3	295033	6189838
Nebo 4	294661	6189893

Environmental Management Update

Train Noise Update

Sounding of Horns at Crossings

- Currently the official RailCorp requirement regarding all crossing is that train drivers must blow their horn.
- This has been identified as an issue in the community, with Metropolitan Colliery and Wongawilli Colliery experiencing similar issues, among other sites in NSW
- RailCorp is investigating changing the requirement to sound horns at all crossings if there are controls in place. Initial advice indicates that flashing lights or similar may eliminate the need to blow the horn.
- Currently, some Pacific National drivers are following our request not blow the horn at crossing at night but some are following the official requirement.
- This will not remove the need to blow horns at the 2 public road crossings on our rail easement.

Environmental Management Update

Dust Best Practice

2.5 Ranking of Particulate Emissions Activities

Particulate emissions from activities, as detailed in Section 2.3 have been ranked according to their annual mass emissions of TSP, PM₁₀ and PM_{2.5}. Ranking of the activities are shown in Table 2-4.

TABLE 2-4 Ranking of estimated controlled particulate emissions by activity

Rank	Mining Activity	TSP (tonne/year)	PM ₁₀	PM _{2.5}
1	Bulldozing coal on the stockpile	17.94	5.75	0.40
2	Material transfer of coal via conveyors	16.84	2.33	0.32
3	Loading trains from the coal stockpile	14.04	1.94	0.27
4	Wind erosion on the coal stockpile	4.54	2.27	0.34
5	Wheel generated particulates on unpaved roads	4.28	1.42	0.14
6	Screening	3.0	1.04	ND
7	Train loading from coal bins	0.32	0.15	0.02
8	Loading coal to the stockpile	0.08	0.04	0.01

2.6 Top Four Particulate Emission Activities

The top four particulate emission generating activities of TSP, PM₁₀ and PM_{2.5} at the Wongawilli Colliery are listed in Table 2-5.

TABLE 2-5 Top four particulate emission generating activities

Rank	Mining Activity	TSP (tonne/year)	PM ₁₀	PM _{2.5}
1	Bulldozing coal on the stockpile	17.94	5.75	0.40
2	Material transfer of coal via conveyors	16.84	2.33	0.32
3	Loading trains from the coal stockpile	14.04	1.94	0.27
4	Wind erosion on the coal stockpile	4.54	2.27	0.34

Environmental Management Update

Dust Best Practice

TABLE 3-5 Estimated particulate emissions by application of best practice controls

Activity	Control	% Reduction	TSP (tonne/year)	PM ₁₀ (tonne/year)	PM _{2.5} (tonne/year)
Wind erosion on the coal stockpile	Bypass stockpile	100%	0	0	0
	Water Spray	0 – Current control	4.54	2.27	0.34
	Chemical wetting agents	0 – Current Control	4.54	2.27	0.34
	Surface crusting agent	95%	0.227	0.1135	0.017
	Carry over wetting from load in	30%	3.18	1.60	0.24
	Silo with bag house	98%	0.09	0.454	0.01
	Cover storage pile with a tarp during high winds	98%	0.05	0.02	0.01
	Vegetative wind breaks	30%	3.18	1.60	0.24
	Reduce pile height	30%	3.18	1.60	0.24
	Wind screens/wind fences	77.5%	1.02	0.51	0.08
	Erect 3-sided enclosure around storage piles	75%	1.14	0.57	0.09
	Application of water at transfers on conveyor	0 – Current control	16.84	2.33	0.32
Material transfer of coal via conveyor	Wind shielding conveyor – roof or side wall	0 – Current control	16.84	2.33	0.32
	Wind shielding conveyor – roof and side wall	0 – Current control	16.84	2.33	0.32

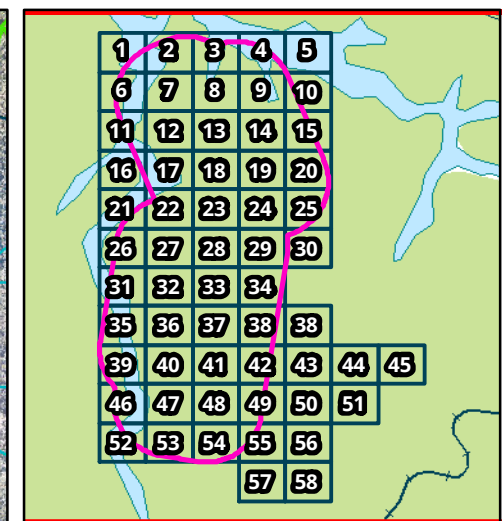
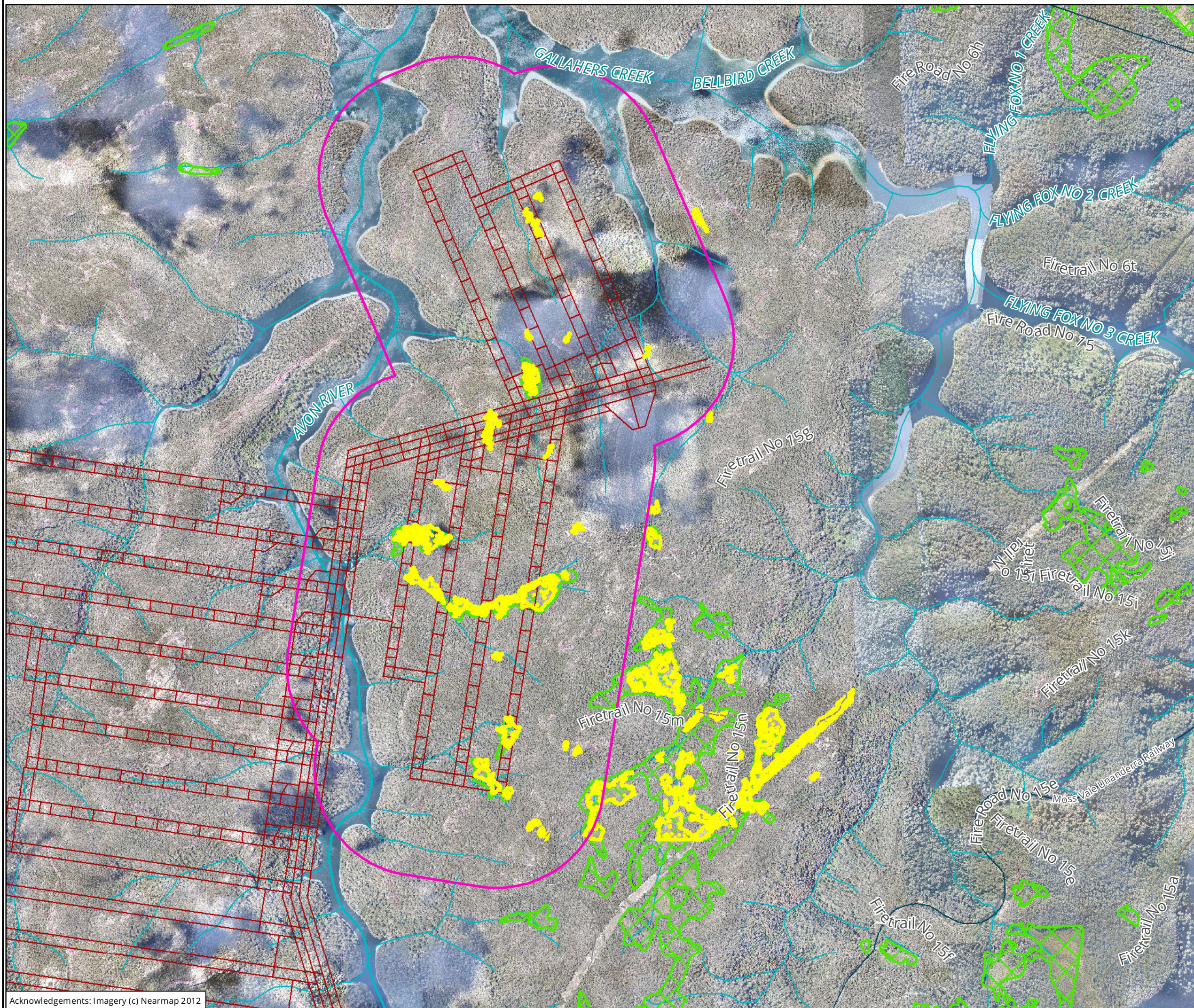
	Belt cleaning and spillage minimisation on conveyor	0 – Current control	16.84	2.33	0.32
	Enclosure of transfer points	0 – Current control	16.84	2.33	0.32
Loading trains from the coal stockpile	Bypass ROM stockpiles	100%	0	0	0
	Minimise drop height	0 – Current control	14.04	1.94	0.27
	Water sprays on ROM pad	0 – Current control	14.04	1.94	0.27
Bulldozing coal on the stockpile	Keep travel routes and materials moist	0 – Current control	17.94	5.75	0.40

Community Issues



General Business

Next Meeting



- Legend**
- 600m Buffer
 - Avon Swamp Boundaries
 - Upland Swamps
 - Avon Longwalls

Map

LiDAR swamp mapping

0 0.2 0.4 0.6 0.8 1
Kilometers

Scale: 1:19,800 @ A3
Coordinate System: GDA 1994 MGA Zone 56

biosis
Biosis Pty Ltd

Ballarat, Brisbane, Canberra, Melbourne,
Sydney, Wangaratta & Wollongong

Matter: 15764
Date: 01 February 2013
Checked by: NMG, Drawn by: ngarvey
Location: P:\15700s\15764\Mapping\Field Maps\15764 Flora Overview 20130121