
MINUTES

Meeting No. 5 of the
Gujarat NRE Wongawilli Colliery Community Consultative Committee
Tuesday, 4 June 2013

Held at Wongawilli Community Hall, West Dapto Road, Wongawilli

ATTENDANCE:

Col Gellatly	- Chairperson
Kevin Roots	- Community Representative
Peter Turner	- Community Representative
Ron Zwicker	- Wollongong City Council
Dave Clarkson	- Group Approvals Manager (NRE)
Mat Campbell	- Environmental and Community Relations Manager (NRE)
Sasa Cugalj	- Environmental Officer (NRE)

APOLOGIES:

Chris Irving	- Environmental Manager (NRE)
Katrina McDonald	- Community Representative
Lois Burgess	- Community Representative

Col Gellatly declared the meeting open at 6.00 pm.

PREVIOUS MATTERS ARISING:

- As per presentation.
- Follow-up Chris Irving regarding the provision of costing for emission-control measures.
 - Chris is looking at the use of a “liquid” tarp or spray covering for the rolling stock. This information yet to be provided.
- Dust monitoring along the rail line.
 - Depositional dust monitors are due to be installed within the next week.

COMPANY REPORTS AND OVERVIEW OF ACTIVITIES:

Group Approvals Manager – Dave Clarkson

Dave Clarkson gave a report as per the attached presentation.

- NRE has approval of 800 metres for LWN2. A Sydney Water power line situated at the end of the longwall required an updated electrical transmission line management plan to be submitted to Division of Resources and Energy.
- Stage 2 expansion project – no activity to report since last meeting.
 - General discussion took place regarding the down-turn in the mining industry. NRE does not have a time-frame for re-commencement of the project. Wongawilli mine currently has approximately four years’ worth of coal to mine.

Environmental Officer – Sasa Cugalj

Sasa gave an environmental management update, as per the attached presentation.

- The monthly EPL monitoring report will be updated soon.
- It was requested that the monitoring points for the Nebo longwalls subsidence management plan be made available on the website. NRE is waiting on the department and will provide this information.
- Col has suggested that the graphs in the presentation be aligned/amalgamated to better reflect the information provided. Dave suggested that we should also include the longwall start and end dates within the graphs.
- Information about the location of the swamps above the longwalls will also be provided on the graphs.
- Peter mentioned that some of the groundwater piezometers that had been updated by BHP showed a baseline up to 2004 but with a gap to 2011. He suggested that the data from BHP should also be provided.

COMMUNITY ISSUES:

- Kevin stated he had no major issues to raise.
- The first draft of the report from Biosis is due by week's end. Once finalised, it will be made available to the CCC and a Biosis representative will be asked to attend the meeting.
- Concern raised that the reference to water quality in the reports does not give a breakdown of metal ions released. It was requested that a graph showing the trend-line be provided. Dave to investigate.
- General discussion took place about the depth at which piezometers are installed. Peter stated that Peabody has piezometers installed at surface level and at 5 m and 10 m depths, including into the bedrock. Dave to follow this up.

NEXT MEETING:

- Due to the proposal to extend the time period between meetings, Col suggested that NRE circulates an update to members in early August. Dave said that NRE would look at providing a fortnightly longwall progress update on the website.
- Col will e-mail members three weeks prior to the next meeting to request members to provide notice of any issues they would like to raise at the meeting. This will allow NRE to have responses available.

The next meeting is to be held on Tuesday, 10 September 2013 at 6.00 pm.

The meeting closed at 6.40 pm.

Tabled Documents

- Copy of NRE presentation that was made to the meeting.
- Minutes of Wongawilli CCC meeting held on 26 March 2013.

ACTIONS REQUIRED

Item No.	Action Required	Responsibility	Deadline
1	Provide information on monitoring points for the Nebo longwalls SMP on NRE's website.	Sasa Cugalj	
2	Amalgamate the graphs from the presentation to better reflect the information provided, including the longwall start and end dates and the location of the swamps.	Sasa Cugalj	
3	The groundwater piezometers that had been updated by BHP showed a baseline up to 2004 but with a gap to 2011. Provide the data from BHP.	Sasa Cugalj	
4	Reference to water quality in the reports does not give a breakdown of metal ions released. It was requested that a graph showing the trend-line be provided.	Dave Clarkson	
5	Investigate the depth at which piezometers are installed.	Dave Clarkson	
6	NRE to circulate an update to members in early August. Look at providing a fortnightly longwall progress update on the website.	Mat / Dave	Early August
7	E-mail members three weeks prior to next meeting to request notice of any issues they would like to be raised.	Col Gellatly	20 August 2013

Ends



NRE Wongawilli

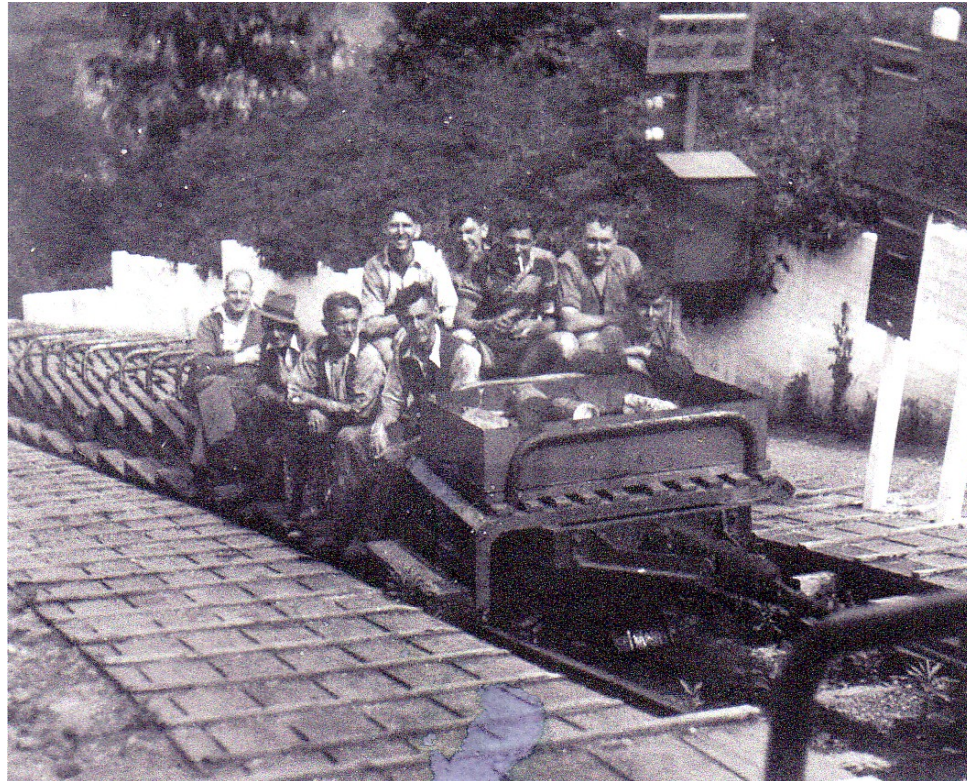
Community Consultative Committee

4th June 2013

Agenda

- 1 Apologies
- 2 Declaration of interests
- 3 Correspondence
- 4 Previous matters arising
- 5 Company reports and overview of activities
- 6 Community issues
- 7 General business
- 8 Next meeting

Apologies



Declarations of Interest



Correspondence

Previous Matters Arising

- **ACTIONS ARISING:**
- Comparative data on a like-for-like comparison of coal-train dust is difficult to obtain, will endeavour to obtain more information.
- Follow-up Chris Irving regarding the provision of costings for emission-control measures.
- Discussion took place regarding the upland swamp shallow groundwater monitoring baseline data, which shows the levels and quality of ground and surface water. The data timeframe is from two years ago to the present. NRE will make this data available in downloadable format on its website.
- General discussion took place about dust monitoring. NRE does not monitor for dust from trains between the Wongawilli colliery and the port. Depositional dust monitors along the line yet to be installed.
- It was suggested that the data graphs be improved to include the upper part of the scale. NRE to amend. Updated groundwater data to be provided to next meeting.

Company Reports and Overview Of Activities

Approvals Overview

Environmental Management
Compliance

APPROVALS

Nebo Extraction Plan/Subsidence Management Plan

- Planning approval of extraction of Nebo Longwalls 1-6 (LWN1-6) was part of Continuing Use Pt3A approval issued in November 2011.
- NRE also need Planning approval of an Extraction Plan for LWN1-6 as part of a condition of the Continuing Use Pt3A approval
- NRE also need a Subsidence Management Plan approval for the same extraction from Division of Resources and Energy (DRE). This is a requirement of NRE's Mining Lease.
- Both the Extraction Plan (EP) and Subsidence Management Plan (SMP) applications have been approved and the approval documents are on the NRE website.
- A final condition of the SMP approval requires approval of a Subsidence Monitoring Plan. Approval of 800m for N2 has been approved with the remainder of the Nebo LW to be approved when the Electricity Powerline SMP is approved by Sydney Water.

APPROVALS

Nebo Longwall N7

- An application to modify the Continuing Use Pt3A to allow the addition of an additional longwall is likely to be submitted to the Department of Planning late 2013 or early 2014.
- It will add an additional longwall on the eastern side of the existing approved Nebo Longwalls 1 - 6
- NRE also need Planning approval to amend its approved Extraction Plan for the LWN1-6 to add LW7
- NRE also need Division of Resources and Energy (DRE) approval to amend its approved Subsidence Management Plan for Nebo LW 1-6 to add LW7.
- Applications to modify the Extraction Plan (EP) and Subsidence Management Plan (SMP) will be submitted in parallel with the Pt3A modification application to save time.

APPROVALS



APPROVALS

NRE Wongawilli Colliery Stage 2 Expansion Project

Purpose

The current purpose of the application is:

- to gain approval to extract 6 longwalls in a new mine area in the Avon Domain (LWA1-6);
- to gain approval for an additional longwall known as LWN7 in the Nebo area
- to construct surface infrastructure to manage a proposed increase in coal production to 3 million tonnes per year from the current 1 million tonnes per year.
- to construct a new ventilation shaft

Application Progress

- A lead consultant, AECOM, has been engaged to manage the application for NRE and will work with the consultant preparing the Environmental Assessment for the ventilation shaft element of the proposal.
- NRE is still finalising the mine planning to inform the application
- It is currently anticipated that an application will be submitted to DoPI in the third quarter of 2013.
- Its likely that the application will consist of a modification of NRE's current Continuing Use Pt3A approval for LWN7 and a new State Significant Development (SSD) for LWA1-6

Environmental Management Update

NRE Wongawilli Colliery Jan – Mar 2013

■ General

- Currently no longwall mining.
- Anticipated move to Nebo Longwalls in April 2013.
- Currently limited train movements due to no longwall production.

■ Environmental Protection License Compliance Jan-March 2013

- Discharge of water from sediment Pond C that occurred on 29th January. Not on EPL Licence but self reported to EPA. Water sample taken. Results received since last CCC meeting show good water quality.
- Monthly EPL Monitoring Report on website current for February 2013.

■ Mining Operation Plan Compliance

- Nil Non Compliance.

■ MP 09_0161 Nebo Area Project Approval Compliance

- Management Plans to be submitted to Department of Planning by 28th March.
- Bushfire Management Plan under development by Cardno consultants – 1 March submission date passed due to catchment visit being delayed by weather. To be submitted by April 26th.
- Depositional Dust Sites along Rail Easement yet to be installed as per NRE Air Quality statement of commitment .
- Noise survey being finalised as per Schedule 4, Condition 7. Mitigation and monitoring actions to be developed based on report findings. Wilkinson Murray finalising. Due by June 2013.
- Complaints Register being updated every month – on website.
- Nebo Baseline Data Report due 28 March 2013.

Environmental Management Update

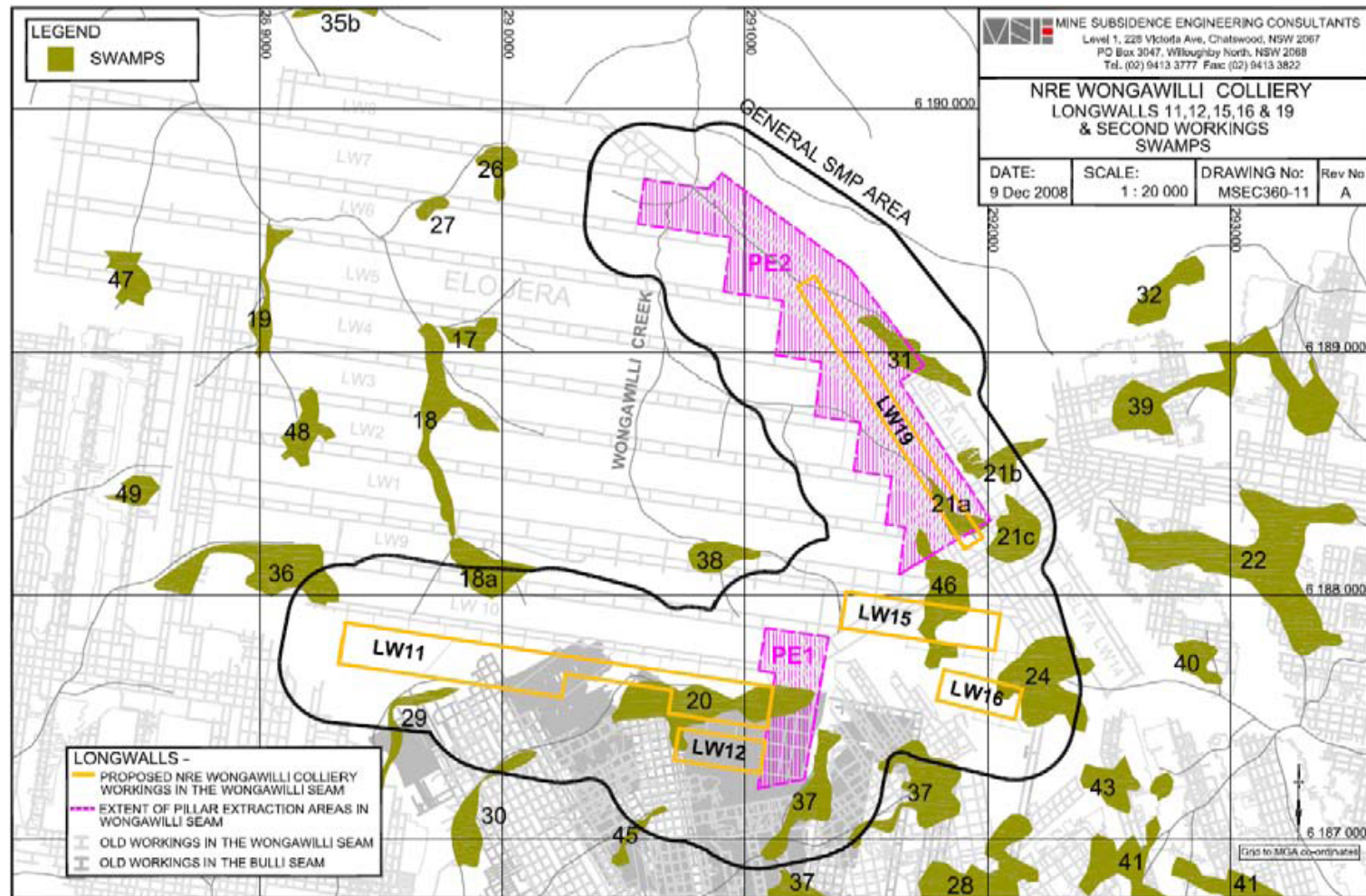
NRE Wongawilli Colliery Jan – Mar 2013

- Subsidence Management Plan LW 11,12,15,16,19,20
 - LW 15 End of Panel Report due date moved to 28 March 2013
 - No subsidence management plan triggers exceeded during period
- Subsidence Management Plan Nebo Longwalls N1-N6
 - Approved 25 January 2013 – approval to be distributed to all agencies within 30 days and has been placed on website. Extraction Plan approval from Department of planning received on 21 December 2013.
 - Subsidence Monitoring Program being finalised.
 - 2 subsidence monitoring lines, 9 far field monitoring points and 3 stream level loggers need to be installed prior to extraction. SCA REF approval received 25 March 2013 and will start looking at getting these installed after Easter.
- Complaints
 - No complaints received
- Projects
 - Games Council NSW Deer Control Program commenced 17 December 2012 and progressing well.
 - Mine Managers Cottage Project - no progress since last update.

Environmental Management Update

Upland Swamp Shallow Groundwater Monitoring

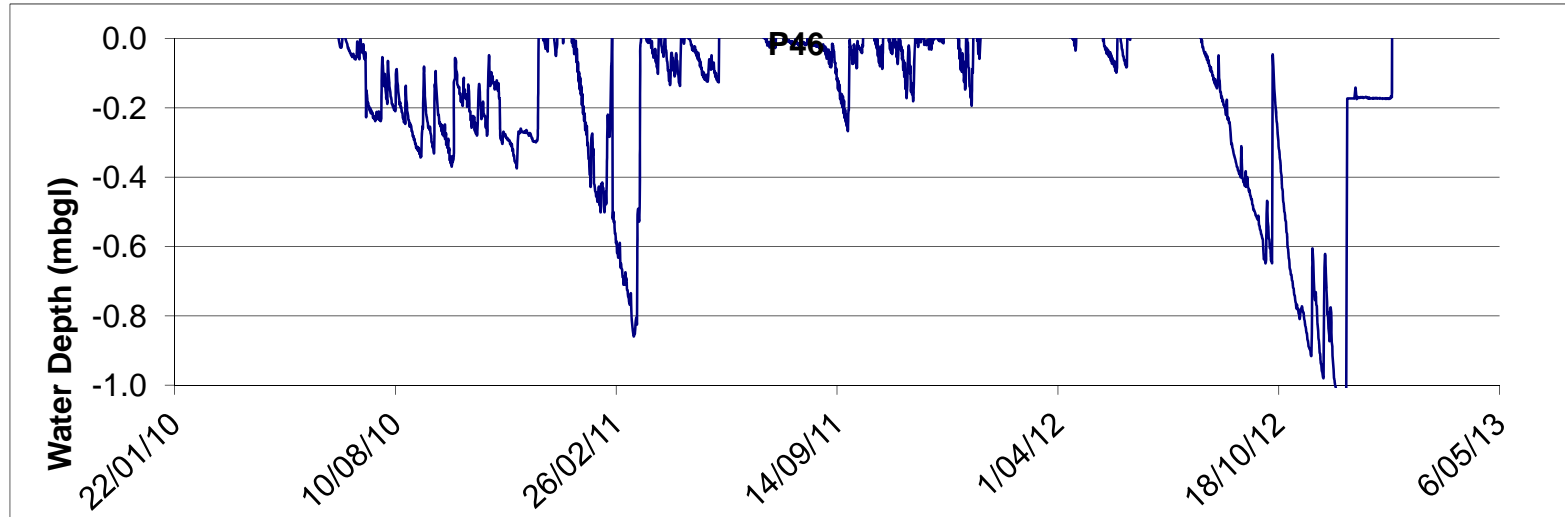
Upland Swamp Locations LWs 11-20



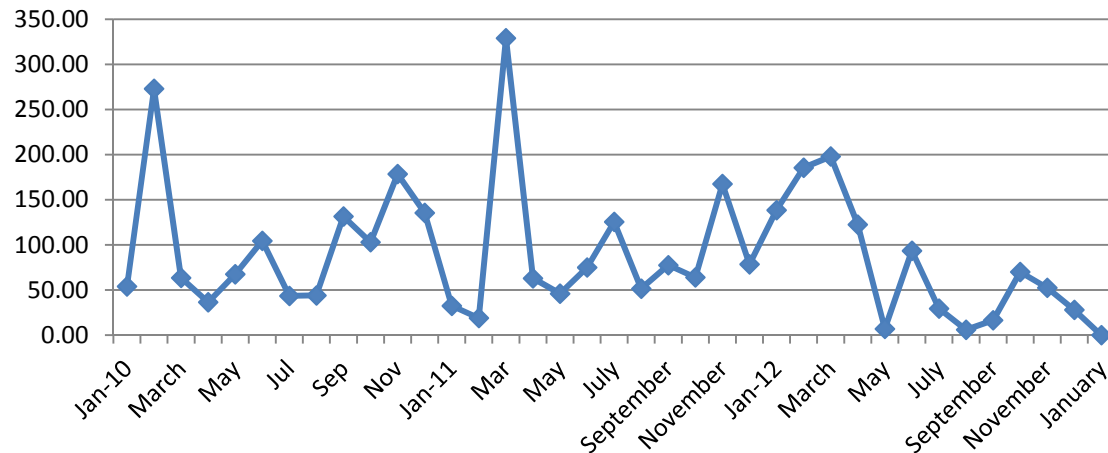
Environmental Management Update

Upland Swamp Shallow Groundwater Monitoring

Swamp 46 – Impacts Due to LW 15



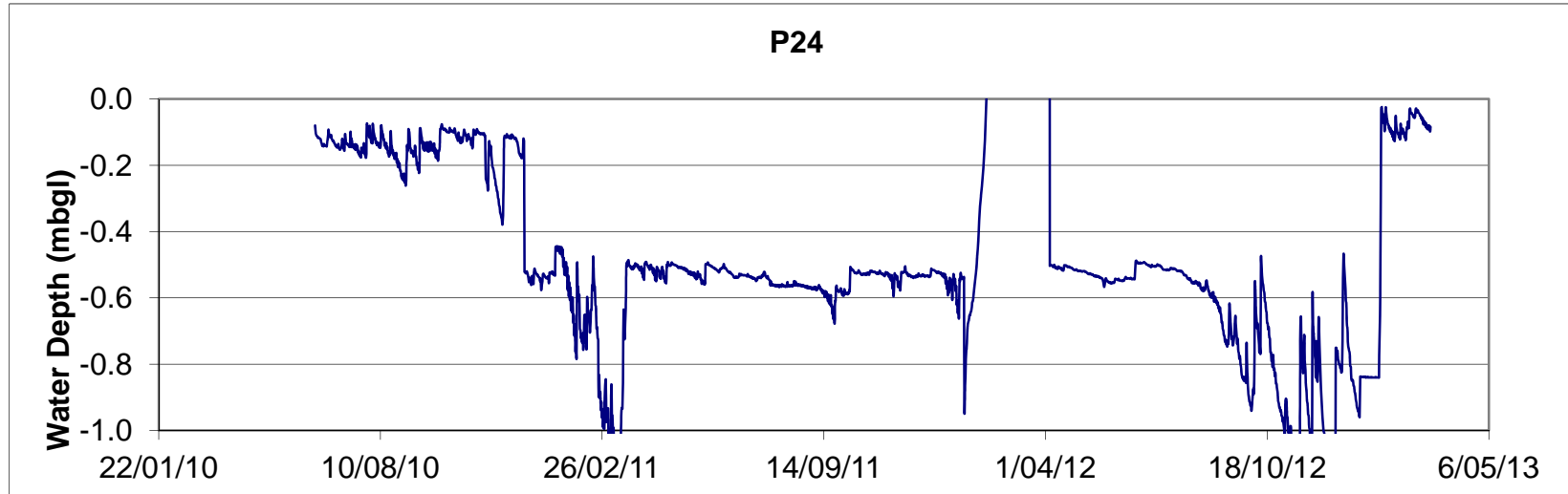
Total Monthly Rainfall (mm)



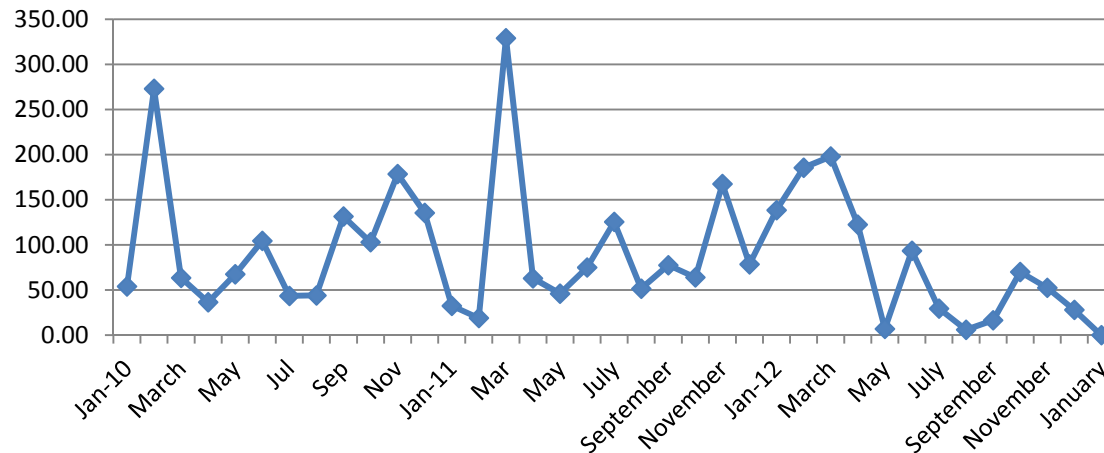
Environmental Management Update

Upland Swamp Shallow Groundwater Monitoring

Swamp 24 – Impacts Due to General Extraction



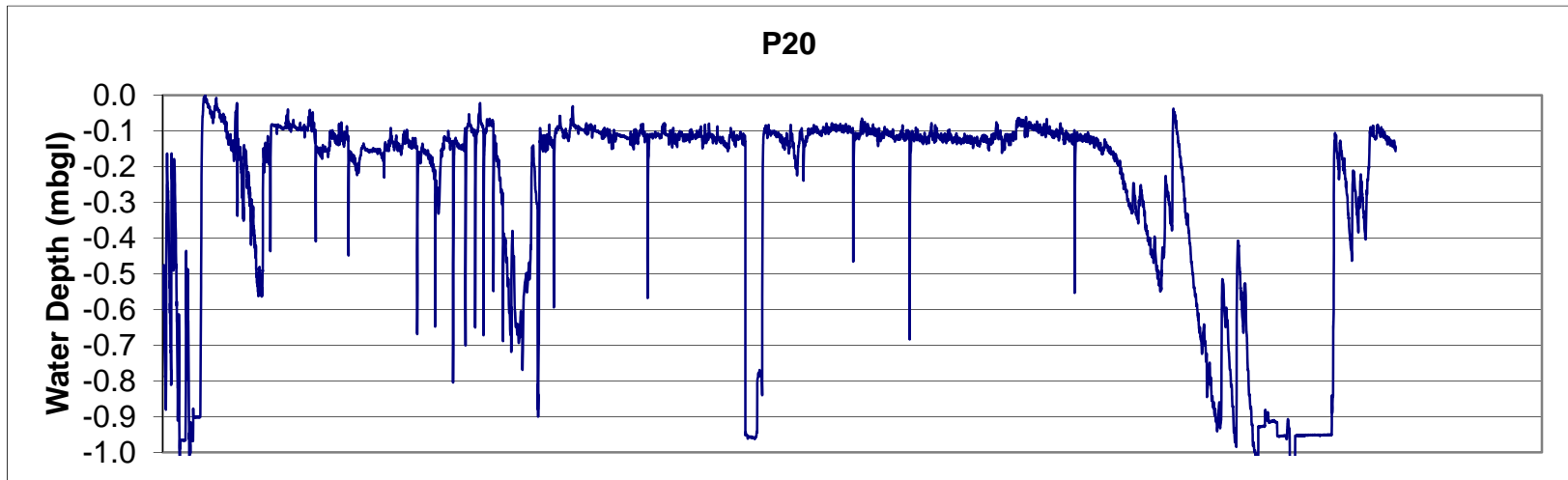
Total Monthly Rainfall (mm)



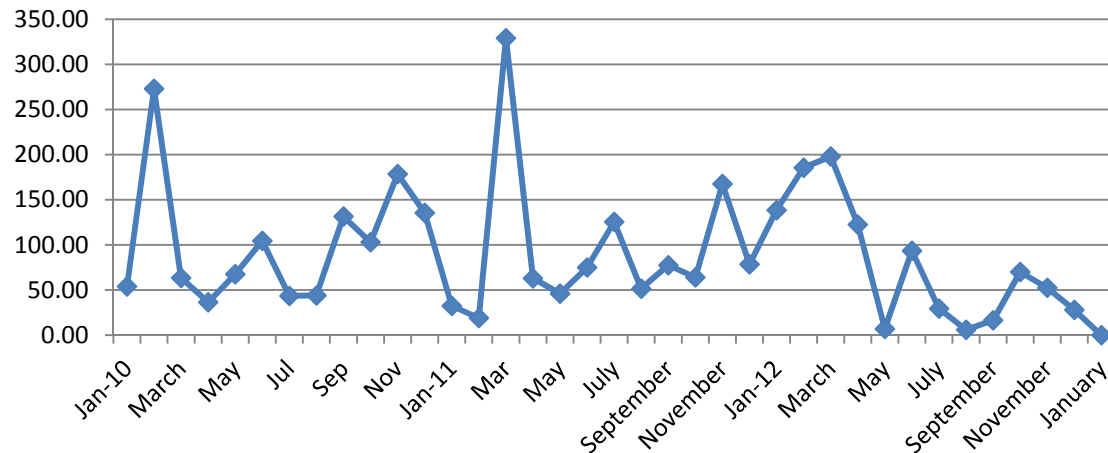
Environmental Management Update

Upland Swamp Shallow Groundwater Monitoring

Swamp 20 – Impacts Due LWs 11, 12 & 20



Total Monthly Rainfall (mm)

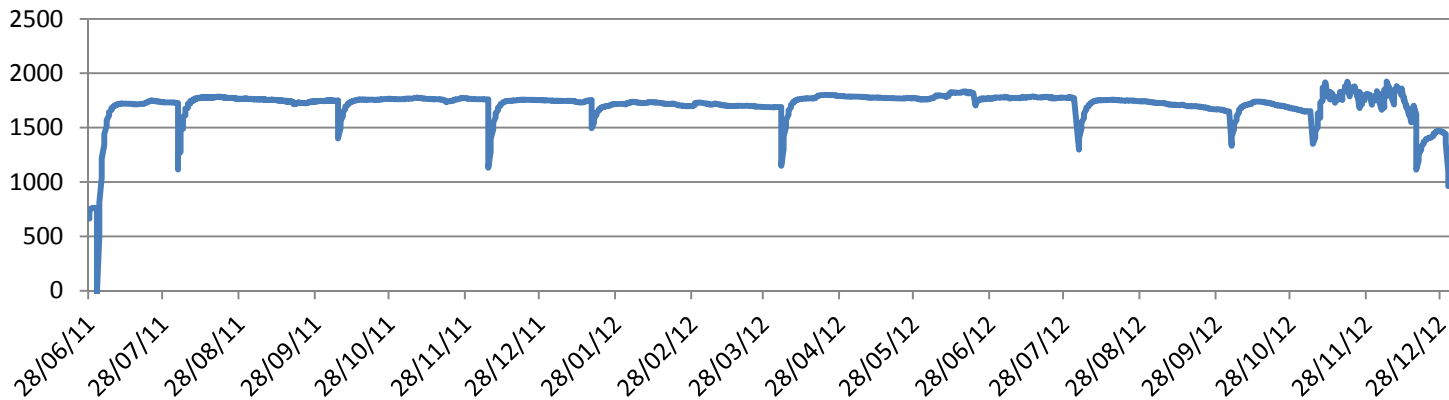


Environmental Management Update

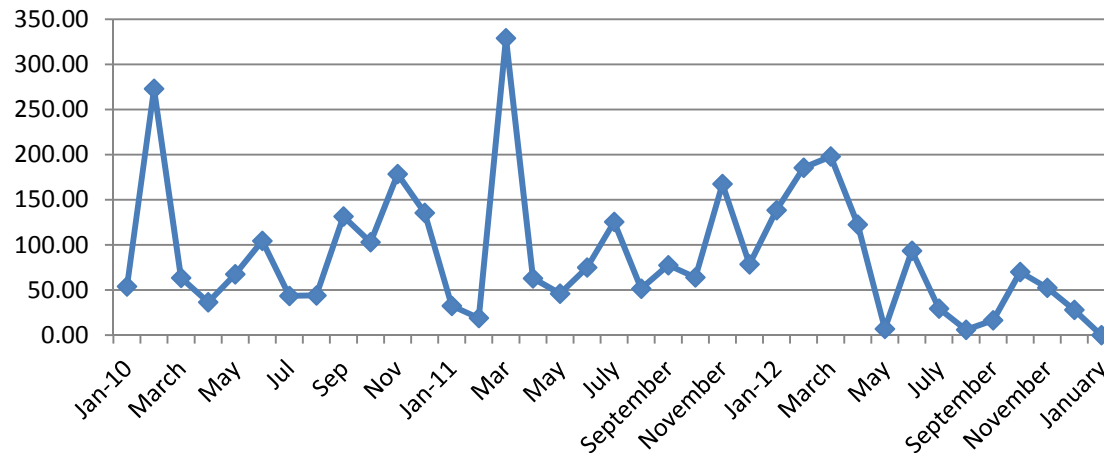
Upland Swamp Shallow Groundwater Monitoring

Swamp 21a – Impacts Due LW 19

P21a



Total Monthly Rainfall (mm)

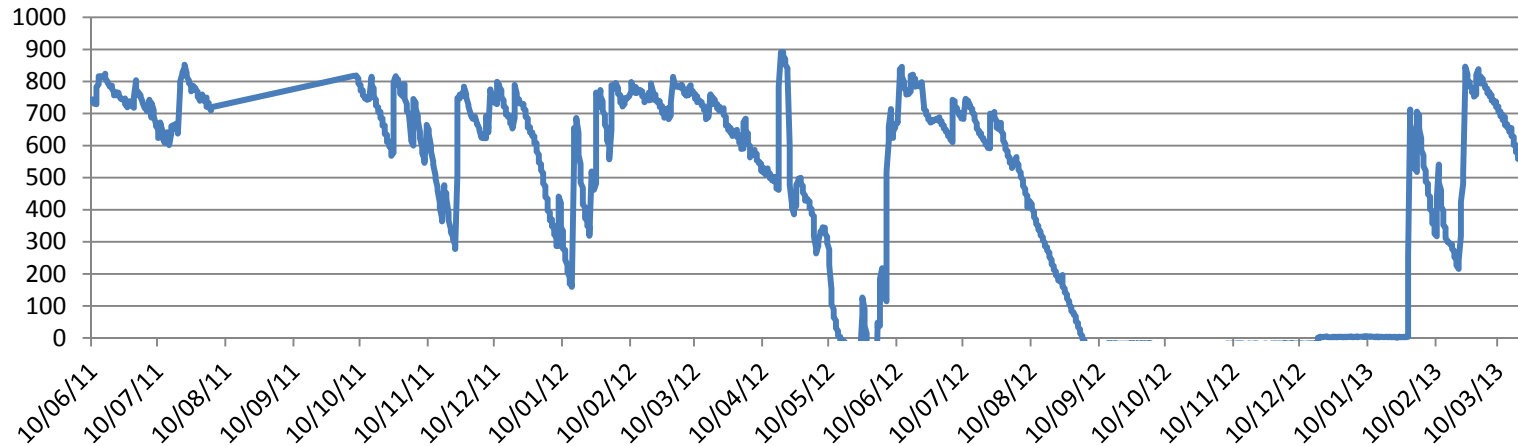


Environmental Management Update

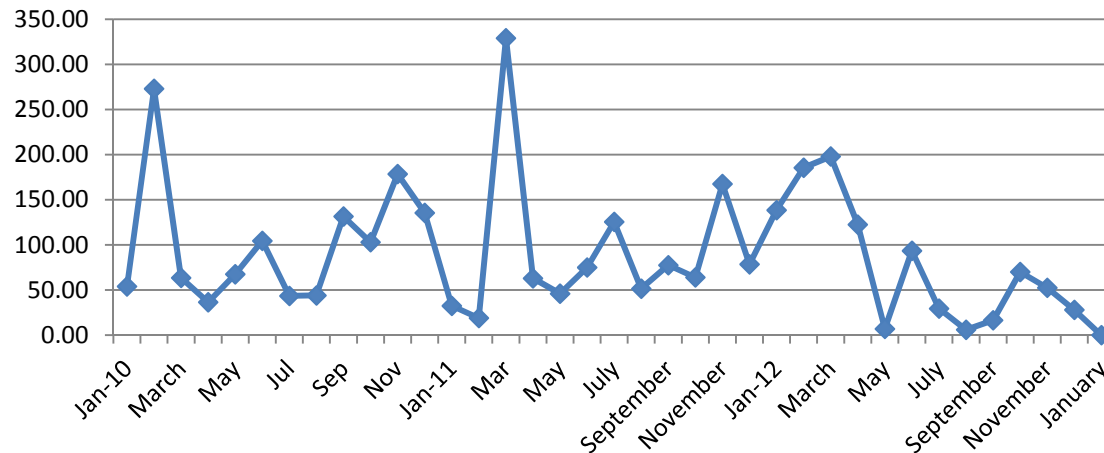
Upland Swamp Shallow Groundwater Monitoring

Swamp 31 – Impacts Due LW 19

P31



Total Monthly Rainfall (mm)



Environmental Management Update

Upland Swamp Shallow Groundwater Monitoring

Extraction Schedule LWs 11-20

LW12 – 25/8/2009 to 26/11/2009

LW11 – 1/2/2010 to 16/5/2011

LW19 – 26/6/2011 to 5/12/2011

LW20 – 18/12/2011 to 11/4/2012

LW15 – 24/5/2012 to 6/11/2012

Environmental Management Update

Upland Swamp Shallow Groundwater Monitoring

Location of LW 11,12,15,16,19 & 20 Swamp and Groundwater Monitoring Sites

Monitoring Site	Easting	Northing
GROUNDWATER PIEZOMETERS		
PWW1	291677	6187507
EGW2	289434	6188008
EGW3	289773	6187749
EGW4A	290122	6188359
EGW5	290538	6187861
EGW6	290453	6188065
UPLAND SWAMP PIEZOMETERS		
P20	291144	6187583
P21A	291860	6188293
P24	292076	6187585
P31	291867	6188897
P46	291875	6187988

Environmental Management Update

Upland Swamp Shallow Groundwater Monitoring

Location of Nebo Longwalls N1-N6 Swamp and Groundwater Monitoring Sites

Monitoring Site	Easting	Northing
GROUNDWATER PIEZOMETERS		
Nebo 6	295237	6189510
Nebo 7	295477	6189585
Nebo 8	294679	6189485
Nebo 8A	294549	6189499
PE1	291676	6187507
WW11	288343	6184339
WW20B	291099	6184158
OPEN GROUNDWATER STANDPIPES		
Nebo 1 (S)	295153	6188762
Nebo 1 (D)	295152	6188761
Nebo 2 (S)	294662	6189246
Nebo 2 (D)	294662	6189237
Nebo 3	295033	6189838
Nebo 4	294661	6189893

Environmental Management Update

Train Noise Update

Sounding of Horns at Crossings

- Currently the official RailCorp requirement regarding all crossing is that train drivers must blow their horn.
- This has been identified as an issue in the community, with Metropolitan Colliery and Wongawilli Colliery experiencing similar issues, among other sites in NSW
- RailCorp is investigating changing the requirement to sound horns at all crossings if there are controls in place. Initial advice indicates that flashing lights or similar may eliminate the need to blow the horn.
- Currently, some Pacific National drivers are following our request not blow the horn at crossing at night but some are following the official requirement.
- This will not remove the need to blow horns at the 2 public road crossings on our rail easement.

Environmental Management Update

Rail Bridge Works



The western abutment at Bridge WL5 on the Wongawilli Line exhibits signs of having rotated

Environmental Management Update

Rail Bridge Works



Cored boreholes are
required into bedrock at
12.5 m
for the purpose of the
anchor design

Environmental Management Update

Rail Bridge Works



Installation of the whale tail design bridge support in conjunction with tensioned wire ropes will align the bridge.

Environmental Management Update

Rail Bridge Works



Wire rope is placed down
the bored holes and
grouted 12.5 metres into
the bedrock below the
bridge

Environmental Management Update

Rail Bridge Works



Wire rope is placed
down the bored holes
and grouted 12.5
metres into the bedrock
below the bridge

Environmental Management Update

Rail Bridge Works



The wire ropes are tensioned to 150 ton .

The bridge is rotated back into alignment .

Environmental Management Update

Rail Bridge Works



The trains will travel over the bridge at 20 km per hr

Environmental Management Update

Coal Train Dust Update

Like for Like Comparison of Coal Train Dust

- Unable to locate specific information on like for like comparisons of coal train dust transport. Below is an excerpt from the 2011 NSW Coal Mining Benchmarking Study
<http://www.environment.nsw.gov.au/resources/air/KE1006953volumel.pdf>:
- Sources of particulate matter emissions from trains are:
 - The coal surface of loaded wagons
 - Leakage of coal from doors of loaded wagons
 - Wind erosion of spilled coal in the corridor
 - Leakage of residual coal from doors of unloaded wagons
- Best practice measures to control emissions of particulate matter from rail corridors include:
 - Use of profilers to manage overloading or underloading of wagons
 - Maintain a consistent profile. (Loading via front-end loaders and clam shells produces uneven loads that are susceptible to spillage and reduce the effectiveness of suppressants.)
 - Maintaining the 100 mm freeboard around the edge of the wagon
 - Application of a suppressant to the surface of the coal profile
 - Removing parasitic coal from the surface of the wagons before leaving the mine site
 - Covering load (e.g. tarpaulins or lid)
 - ☐ Wagon wheel wash

Community Issues



General Business

Next Meeting