

Russell Vale Underground Expansion Revised Project

PROJECT INFORMATION SHEET No.2
MAY 2019

Wollongong Coal owns and operates the Russell Vale Colliery located off the Princes Highway in Corrimal. Originally known as South Bulli, Russell Vale Colliery is one of the oldest operating coal mines in Australia, dating back to the 1880's. The Colliery is currently in care and maintenance.

In 2009 an application to extend operations was lodged with the State government. This proposal was referred to as the Underground Expansion Project (UEP). Since then, the project has been through a number of iterations to minimise its potential adverse impacts and has been reviewed by the Planning Assessment Commission (PAC) on two occasions, most recently in 2016. In response to this most recent review, Wollongong Coal has developed a revised mine plan for the UEP, referred to as the Revised Project, which if approved, will provide the company with 5 years of mining to facilitate further exploration and planning processes.

In May 2017, an initial Project Information Sheet (No.1) was delivered to approximately 1,200 residents in the area around the operation. This information sheet provided details regarding the Revised Project, outlined the assessment process and the program of community consultation and the environmental studies to be undertaken.

This Information Sheet (No.2)

- Provides an update on further project refinements and studies
- Summarises the information collected through the consultation process to date
- Identifies the perceived community issues and impacts in relation to the project, and
- Summarises the results of the environmental studies and proposed mitigation measures.

How has the Project changed?

Wollongong Coal has undertaken a substantial redesign of the UEP (referred to as the Revised Project) in response to concerns from the community and government agencies. These design changes have significantly reduced the potential adverse impacts of the mine on the environment and local community.

Longwall mining is no longer proposed as part of the Revised Project. The revised mine design is based on a non-caving first workings mining system that will result in negligible subsidence. This change significantly reduces the potential impact of the subsidence-related mining impacts on groundwater, surface water and biodiversity, and avoids further longwall mining activity in the Cataract Reservoir water catchment.

The Revised Project will operate at a production rate of 1 million tonnes per year, significantly lower than the 3 million tonnes per year originally contemplated in earlier project applications. The lower production rate will result in reduced impacts associated with surface operations including reduced trucking rates relative to previously proposed mine plans.

In a further response to community concerns, Wollongong Coal is proposing a major redesign of the Russell Vale Colliery Pit Top in order to improve stormwater management, as well as minimise noise impacts from coal handling and transport activities on the surrounding community. These changes include relocating infrastructure, enclosing structures to minimise noise and dust impacts and utilising noise barriers and bunds. This has resulted in a significant reduction in predicted noise levels when compared to both historical operations, and to the previously proposed site configuration.

These design changes, in combination with a range of additional management and monitoring measures, are proposed to enable mining to be undertaken in an environmentally and socially responsible manner.



Key Features of the Revised Project Compared to Previously Proposed Project

	Preferred Project (2014)	Current Revised Project (2019)
Mining Method	8 Longwall mining panels	No longwall mining is proposed. Non-caving first workings mining technique with negligible subsidence.
Mining Area	Wonga East only	No change
Production Rate	Up to 3 million tonnes per annum (Mtpa)	Up to 1 million tonnes per annum (Mtpa)
Mine Life	5 years	No change
Total Resource Recovered	Approximately 4.7 Mt ROM coal	Approximately 3.7 Mt ROM coal
Hours of Operation	Underground Mining – 24 hours per day, 7 days per week Surface Facilities – 24 hours, 7 days per week Product Transport - 7.00 am to 10.00 pm, Monday to Friday; 8.00am to 6.00pm Saturday, Sundays and public holidays.	Underground Mining – 24 hours per day, 7 days per week Surface Facilities and Product Transport 7.00 am to 6.00 pm, Monday to Friday. 8.00am to 6.00pm Saturday. No Sundays or public holidays. Provision for occasional operation until 10.00pm Monday to Friday to cater for unexpected Port closures or interruptions.
Operational Workforce	Approximately 300	Approximately 205
Pit Top Facilities	<ul style="list-style-type: none"> Construction and use of two new stockpiles of 140,000 tonnes capacity each with associated reclaim facilities Construction and use of a new Sizing Plant Construction and use of new truck loading facilities Upgrading of existing surface conveyers Ongoing maintenance and refurbishment of ventilation shafts, water and electrical facilities. 	<ul style="list-style-type: none"> Establishment of new emergency clean coal and rejects stockpiles within Pit Top disturbance area Construction of a Coal Processing Plant and ancillary infrastructure to improve product coal quality Relocation of new secondary sizer and surge bin to more shielded locations Construction and use of new truck loading facilities Construction of noise barriers and extension to existing bunds around the Pit Top Ongoing maintenance and refurbishment of ventilation shafts, water and electrical facilities.
Product Transport	Road transport to Port Kembla via Bellambi Lane and Memorial Drive	

The changes that have been made to the Revised Project are as a result of community issues and concerns being addressed in project planning and design.

Benefits

The Revised Project is predicted to generate:

- Capital expenditure of approximately **\$33.5 million** over five years
- Jobs – Up to **22** construction jobs, and up to **205** full time operational jobs
- Royalties / Taxes paid to NSW, including **\$32.5 million** in royalties, **\$3.3 million** in payroll tax, and **\$36 million** in corporate taxes attributable to NSW
- Council revenue – Up to **\$2 million** in Council rates and land taxes
- Local Economy – Net benefit of **\$30.6 million** to Wollongong local area, associated with local employment and local suppliers.

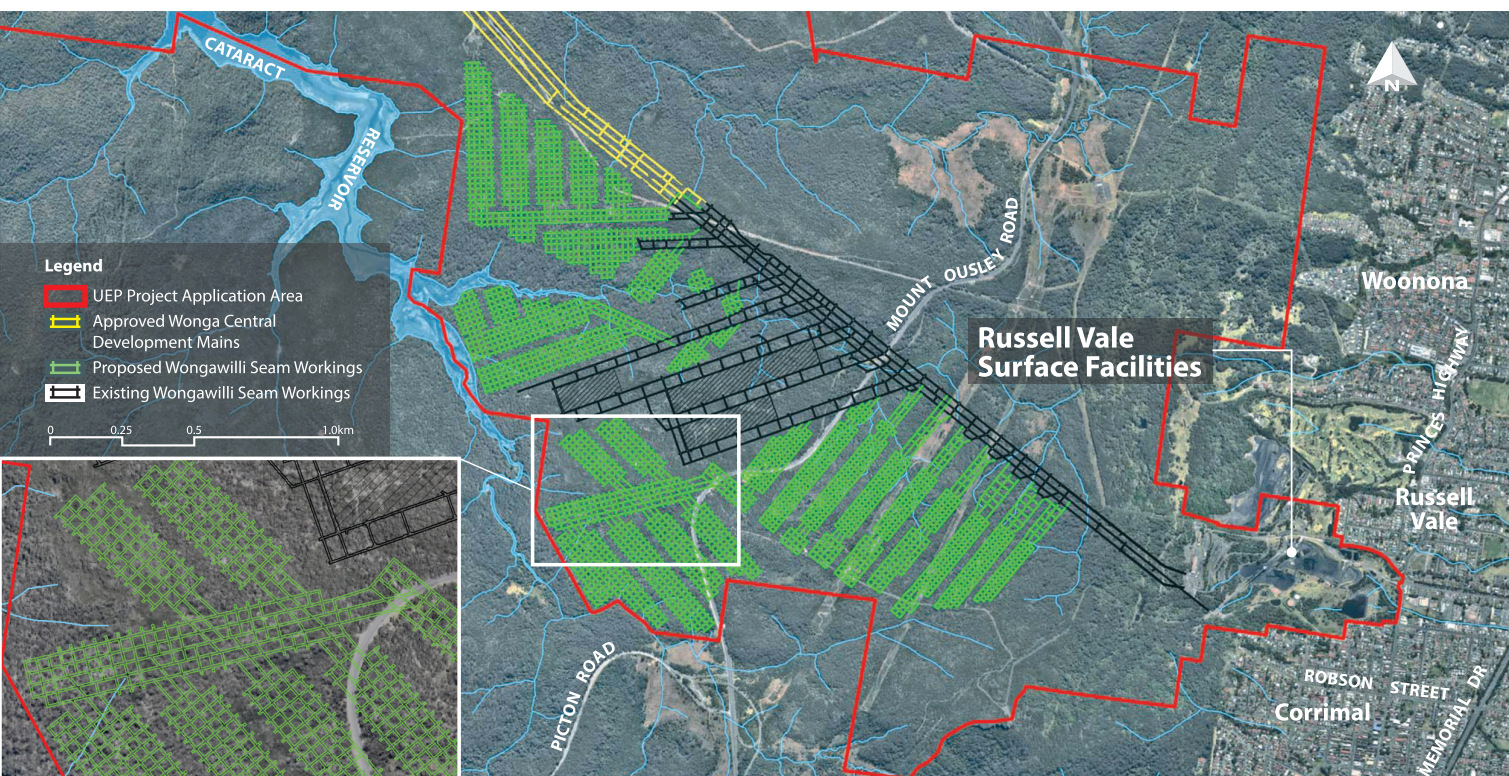


Figure 1 Russel Vale Colliery Key Features

Recent Activity at Russell Vale Emplacement Area

You may have noticed recent activity at the Russell Vale Emplacement Area (RVEA), immediately north of the Pit Top. The RVEA was used as part of earlier mining operations to store oversize material during 2015-2016, up until mining ceased.

In July 2018, the Department of Planning and Environment issued an order to remove approximately 200,000 tonnes of material stockpiled at the RVEA and transport it off site. Removal of this material commenced in early March 2019 and is expected to be completed in July 2019.

Why the delay on the project?

Since the original UEP application was lodged ownership of the company has changed, and as a result, a deeper review of the project plan has been undertaken.

In response to concerns from the community and government agencies, Wollongong Coal has discarded longwall mining and revised the project to significantly reduce the potential adverse impacts of the mine – especially, subsidence. Comprehensive environmental and social assessment of the revised mine design has also been completed.

Wollongong Coal is committed to ensuring that all community and environmental concerns are effectively managed - getting this right takes time.

Will the UEP proceed?

Wollongong Coal is well supported by its ultimate majority shareholder, Jindal Steel & Power Ltd, a major steel and energy conglomerate based in India who sees this project as securing essential raw materials for its steel plants.

Jindal Steel & Power Ltd is a part of the diversified Jindal Group, which supports Wollongong Coal and its ongoing operations, including the Russell Vale Colliery and the Revised Project, if approved.

What are the plans for the future?

Wollongong Coal (and Jindal Steel & Power Ltd) is committed to Russell Vale Colliery and plans to remain a key part of the community, providing long-term stability and employment. Further exploration within the colliery holding is planned to facilitate future mining in an environmentally and socially responsible manner. All future mine planning at the Russell Vale Colliery will be based on non-caving first workings mining methods in order to limit the potential for subsidence related impacts. Wollongong Coal will not be seeking future approval for longwall mining at Russell Vale Colliery.

Any future mining would be subject to a separate assessment and approval process.

Why mine here?

Russell Vale Colliery produces high quality hard coking coal, a product that can help meet the expanding demand for metallurgical coal globally, where it is used for the production of steel. Russell Vale Colliery has a long history in the region and is well located close to coal export facilities at Port Kembla. 3.

Engagement to date?

In 2017, environmental and social studies for the Revised Project commenced, with a detailed round of engagement undertaken with key stakeholders and local residents. This involved:

- **1,200** information sheets have been distributed across the suburbs proximate to the mine operation;
- Contact has been made with approximately **158** stakeholders directly, with **34** interviews conducted with:
 - **27** local landholders and residents;
 - **4** local businesses;
 - **3** community based organisations.
- Review of **88** submissions received during the PAC process in 2015/2016
- Briefings to the Community Consultative Committee for the operation

Environmental and social studies are now nearing completion and further community engagement is underway. Information sessions advertised and held during May 2019 have provided the community with a further opportunity to discuss and provide feedback on the Revised Project.



At what stage is the assessment process?

Community feedback provided as part of the current round of engagement will be considered in the finalisation of the environmental and social studies for the Revised Project. The findings of these studies will be compiled in an assessment of the Revised Project and a response to the 2016 PAC review and will be submitted to the Department of Planning and Environment for public exhibition in the coming months.

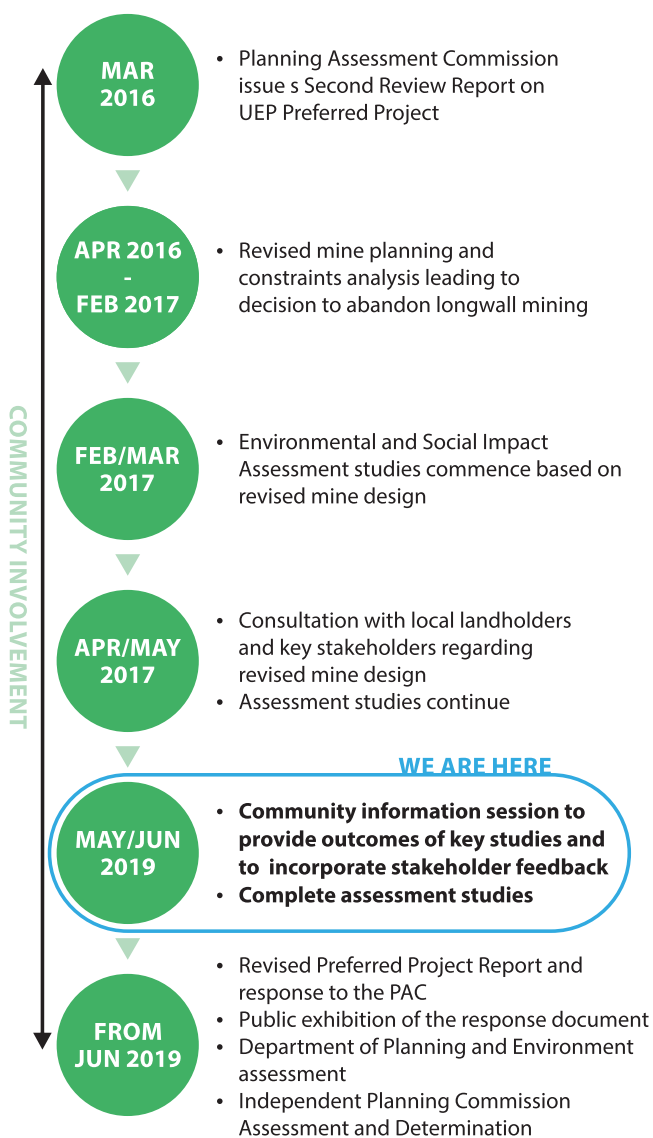
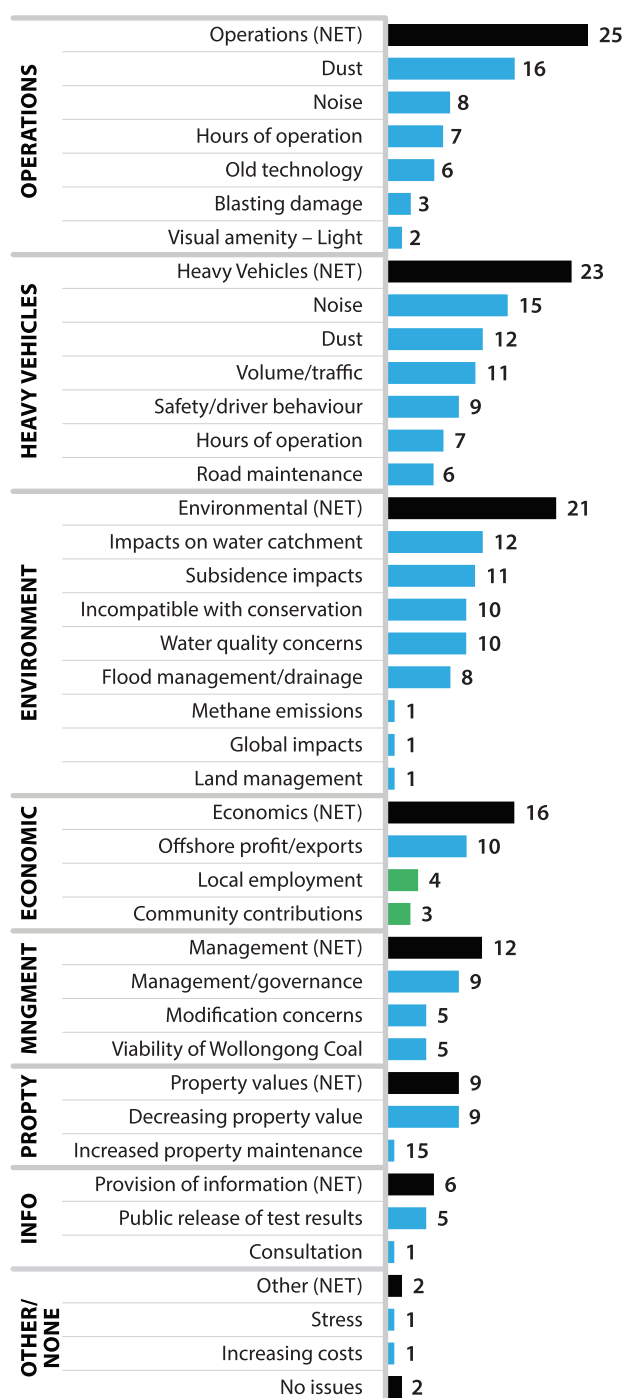


Figure 2 Approvals Process Timeline

What the community has said

The consultation with key stakeholders and local residents identified a number of perceived issues in relation to mine operations, traffic / truck movements, environmental and economic issues. The most commonly raised concerns identified by the community related to dust (surface operations, trucks and health),

noise (operations and trucks) and proximity to the Cataract Dam. Concerns about subsidence and the volume of trucks were also commonly raised.



Engagement, communication and trust in the process

Participants were happy to share their thoughts and concerns about the project and welcomed involvement in the Social Impact Assessment program. However, they also expressed a **lack of trust** in the development approval process generally. In this regard it was felt that in earlier project applications, community members had not had the opportunity to raise concerns nor have these issues appropriately addressed.

Residents requested **open and honest communication**, with the majority of those consulted indicating that the **information sheets** were an effective means of communication.

Perceived Benefits

When asked **“What would be the benefits of the Project?”**, those interviewed identified the following:



Figure 3 Perceived Community Issues/Impacts (n=34)
Note: multiple responses allowed

■ Impact Category
■ Negative Impact
■ Positive Impact

Issues and Opportunities In detail...

The following sections provide more detail on the key issues identified by the community through the consultation process to date and the technical studies and management commitments in relation to these issues.

Quotes obtained through consultation have been used to highlight community views where appropriate.

Air Quality (Dust)

Impact on air quality was the main operational concern, this included dust from coal handling and trucking. The impact of dust on health was also noted with dust exposure a particular concern in relation to long-term health.

"Love Wollongong but not the dust".

"Dust gives me sinus issues".

"The mine needs to use sprays and covers".



Results of the technical review of Air Quality

The Revised Project will operate at a reduced production rate relative to earlier Project designs, resulting in less dust emissions due to less coal being handled and fewer truck movements. A range of dust control measures will also be implemented at the site, including water sprays and enclosures for conveyors and coal transfer points.

An assessment of predicted air quality impacts for the Revised Project has been undertaken in accordance with relevant EPA guidelines. With the proposed dust controls in place, the Revised Project is predicted to comply with all relevant EPA air quality criteria at all residences surrounding the site.

In addition to implementing the proposed dust controls, Wollongong Coal will monitor local air quality and weather conditions so that operations can be modified if required, or additional controls implemented when dust generating conditions are forecast.



Measures to control dust include:

- Enclosure of conveyors and coal transfer points
- Enclosure of new Processing Plant
- Automated water sprays on stockpiles and exposed areas triggered by weather conditions
- Water sprays on the noise berms during construction
- Water carts on unsealed haul routes
- Trials of chemical dust suppressant sprays on long-term stockpiles and unsealed haul routes
- Revegetation/rehabilitation of exposed disturbed areas.

Further pro-active measure will be taken, including:

- Reviewing forecast weather conditions daily so that operations can be modified if required to limit dust generation
- Potential for adverse weather conditions and any required dust control measures will be discussed at daily pre-shift meetings
- Modifying or suspending planned activities, as appropriate, to minimise dust impacts

Reactive measures will also be taken, including;

- Monitoring visual conditions, such as visible dust from trucks above wheel height
- Monitoring weather conditions, such as dry, windy conditions, with winds blowing towards residential areas
- Monitoring ambient air quality conditions

Noise

Noise impacts from the operations and truck movements were also frequently cited as issues of concern to the local community and residents.

"Business hours are Monday to Saturday 8am to 6pm, trucks should be restricted to these hours."

"You should put up walls to reduce the noise."



Pit Top Redesign to Reduce Noise

A major redesign of the Russell Vale Pit Top has been undertaken to minimise the potential noise impacts of the Revised Project. This has included:

- relocation of infrastructure to more shielded locations
- increasing the length and height of existing bunds around the Pit Top
- a new noise barrier along the site access road
- acoustic treatment of coal processing infrastructure
- reduced production and trucking rates

Surface facilities and coal transport will typically be restricted to daytime hours only, with operation between 7.00am and 6.00pm Monday to Friday and 8.00am and 6.00pm Saturday. Surface operations and coal transport may occasionally be required until 10.00pm Monday to Friday in exceptional circumstances such as Port closures or interruptions, however such circumstances would be rare and as a result of unexpected events.

These changes significantly reduce the predicted noise levels of the Revised Project in comparison to both historical operations, and to the previously proposed site configuration.



Results of the technical assessment of Noise

A noise impact assessment has been completed for the Revised Project in accordance with the EPA's Noise Policy for Industry (NPfI). Noise modelling undertaken for the Revised Project shows that with the proposed additional noise controls, the site will generally comply with operational noise criteria at all surrounding residences.

Under adverse weather conditions, there is the potential for minor exceedances (1-2dB) of the criteria during a small percentage (less than 10%) of winter nights at some residences close to the site. The NPfI defines a 1-2 dB exceedance as a negligible impact that would not be discernible by the average listener.

This is a significant reduction in predicted noise levels compared to the previous site configuration, where exceedances (of the then Industrial Noise Policy criterion) of up to 11 dB, 13dB and 9dB were predicted during the day, evening and night respectively.

Traffic noise generated by trucks transporting coal was also assessed against EPA criteria and found to comply at residences along Bellambi Lane and surrounds.

During the construction of noise bunds around the Pit Top there are likely to be short periods when noise levels trigger the need for additional management practices, such as:

- scheduling activities to minimise noise impacts,
- notifying impacted residences of the nature and duration of works,
- using quieter equipment and methods where possible, and
- implementing a complaints handling procedure.

Wollongong Coal will continue to operate two continuous noise monitoring stations within the Russell Vale site in order to evaluate the acoustic performance of the operation in real-time and respond to any noise issues as they arise.



Noise control measures:

- Strategic placement of new infrastructure to provide maximum shielding for surrounding residences.
- Restricting surface facilities and coal transport to 7.00am to 6.00pm Monday to Friday and 8.00am to 6.00pm Saturday. No Sundays or public holidays. Provision for occasional operation until 10.00pm Monday to Friday to cater for unexpected Port closures or interruptions.
- Higher noise bunds and new noise barrier to shield noise from Pit Top and truck movements.
- Enclosure and acoustic treatments to buildings and conveyors.
- 24hr real-time noise monitoring to enable rapid operational response.

Proximity to Cataract Dam / Subsidence

Many stakeholders were concerned that subsidence and mining in close proximity to the Cataract Dam would affect the quality and quantity of water in the dam and major creeks in close proximity.

"Better than previous proposal, but why would you mine anywhere near our water supply?"

"They need to move away from the dam."

"I am not confident that the land isn't going to shift."



Results of the technical review on subsidence

The Revised Project will no longer involve any longwall mining. The Revised Project will instead use non-caving first workings mining techniques only, which have been designed to be long term stable with minimal risk of subsidence. This change means that there will be negligible subsidence associated with the Revised Project within the Cataract Reservoir catchment.

A detailed subsidence impact assessment has been completed based on the revised first workings mine plan. The assessment showed that the Revised Project will result in negligible subsidence and negligible subsidence-related impacts on natural and built surface features (including the Illawarra Escarpment, upland swamps, creeks, slopes and built structures), and on biodiversity, surface water and groundwater within the Cataract Reservoir catchment. Additionally, the risk of proposed mining destabilising historical mine workings is low.

Subsidence monitoring will be undertaken to confirm that observed subsidence levels are within predicted negligible levels.



Subsidence control measures include:

- The proposed mining technique will result in negligible subsidence – no longwall mining is proposed.
- Subsidence monitoring will be undertaken to confirm predicted negligible levels of subsidence.
- Mining is limited to the Wonga East area only.
- No mining underneath the Cataract Reservoir.

Traffic and transport

Residents and the local community have raised concerns in relation to the cumulative impacts the project may have on the existing traffic network.

"A lot of trucks could cause damage or seriously injure people if there are accidents."

"Make sure vehicles are safe and roads maintained"



Results of the technical review on traffic and transport

The Revised Project will generate traffic at levels similar to the previous operations at the site. The traffic impact assessment indicated that with the project design improvements and traffic control measures, it is unlikely that the Revised Project will result in an adverse impact on the performance of the road network (including at key intersections), road safety or road users. Traffic conditions on the road network are predicted to remain satisfactory with the Revised Project operating at full capacity.

A designated truck parking area will be established on site, away from residences and in a shielded location, to prevent trucks queuing on nearby streets in the early morning hours (prior to 7.00am). All trucks awaiting loading will park in this area with engines switched off.

Wollongong Coal has also committed to restrict coal transport to day-time hours only. Coal transport will typically occur between 7.00am and 6.00pm Monday to Friday and 8.00am and 6.00pm Saturday. Coal transport may occasionally be required until 10.00pm Monday to Friday in exceptional circumstances such as Port closures or interruptions. No coal transport will occur on Sundays or Public Holidays.



Traffic and transport control measures include:

- Reduced production levels and coal transport typically restricted to daytime only Monday to Saturday. No Sundays or public holidays.
- Truck speeds monitored.
- Road maintenance contribution to be determined with Council for ongoing maintenance of Bellambi Lane.
- Washing of trucks before leaving site.
- On-site roads will be sprayed and cleaned to reduce dust.

Surface water

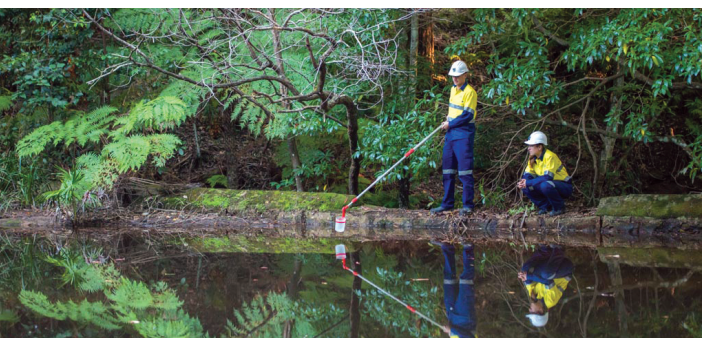
Operational water use, potential for surface water contamination and changes to the volume of surface water have been raised at various stages during consultation with the community.



Results of the technical review on surface water

Wollongong Coal has recently submitted an application to the Department of Planning and Environment to make improvements to the existing surface water management system at the Russell Vale site, in particular, improvements associated with the Bellambi Gully Diversion Pipeline. These improvements are aimed at reducing flooding and improving the quality of water flowing off site.

An assessment of the potential impacts of the Revised Project on surface water resources was undertaken and considered a range of water quality improvement measures for the Pit Top Facilities, including the Bellambi Gully Diversion Pipeline.



The assessment concluded that the proposed improvements to the stormwater system will reduce the frequency and volume of upslope clean catchment runoff entering the site's water management system during high rainfall events, improve water quality leaving the site during flood events and reduce flood impacts to downstream properties, the Princes Highway, Bellambi Lane and Bellambi Gully.



Water related control measures include:

- No mining beneath the Cataract Reservoir.
- The proposed mining method is the key factor in limiting any adverse impact on surface water or groundwater.
- Improvements to surface water management system at the Pit Top to reduce flooding and improve the quality of water flowing off site.
- Water quality will be monitored on a regular basis and results made publicly available.
- The mine will use recycled water as appropriate to service its needs.

Ground water

Potential loss of surface and ground water due to subsidence related cracking and contamination of groundwater has also been raised by the community.



Results of the technical review on groundwater

The Revised Project has specifically been designed to minimise potential groundwater impacts. The non-caving first workings mining technique limits groundwater depressurisation immediately above the coal seam that would otherwise occur if longwall mining techniques were used.

An assessment of potential groundwater impacts of the Revised Project was undertaken, including assessment of potential interactions with historical multi-seam mining.

The results of the groundwater assessment indicate there is unlikely to be any observable groundwater drawdown effect. There is also predicted to be no observable impact on overall groundwater quality as a result of the Revised Project.

Due to the negligible subsidence associated with the proposed first workings mine plan, the Revised Project is not predicted to result in strata deformation or cracking above the coal seam, with no reduction in Cataract Creek baseflow and no observable change in stream flow or groundwater seepage in the Cataract River (upstream of Cataract Reservoir) and Bellambi Creek catchments. The Revised Project is also not predicted to perceptibly impact upland swamps.

Importantly, the Revised Project is not anticipated to have any adverse impact on stored water quantity or quality in the Cataract Reservoir and is considered to satisfy the Neutral or Beneficial Effect test for the Sydney Drinking Water Catchment.

Wollongong Coal will maintain its existing ground water monitoring network and will regularly review monitoring data and management practices to confirm that impacts on groundwater remain within the range of predicted negligible impacts.

An assessment of water use and availability was undertaken, which indicated that the Revised Project will have a surplus of water and will be able to meet site water demands with little to no import of water from off-site sources.

Greenhouse Gas and Energy

Concerns were raised about the contribution the operation would make to Greenhouse gases and the amount of energy the operation would consume.



Results of the technical review on greenhouse gas and energy

A Greenhouse Gas and Energy Assessment was undertaken to estimate the greenhouse gas inventory and energy use for the Revised Project. The assessment concluded that the forecast greenhouse gas emissions and predicted energy use intensity of the Revised Project falls within the normal operating range for an Australian underground coal mine.



Control Measures for Greenhouse Gas and Energy:

- Wollongong Coal will continue to seek operational energy use efficiencies where commercially feasible.
- Wollongong Coal will review renewable energy opportunities as new technology is developed and becomes viable.



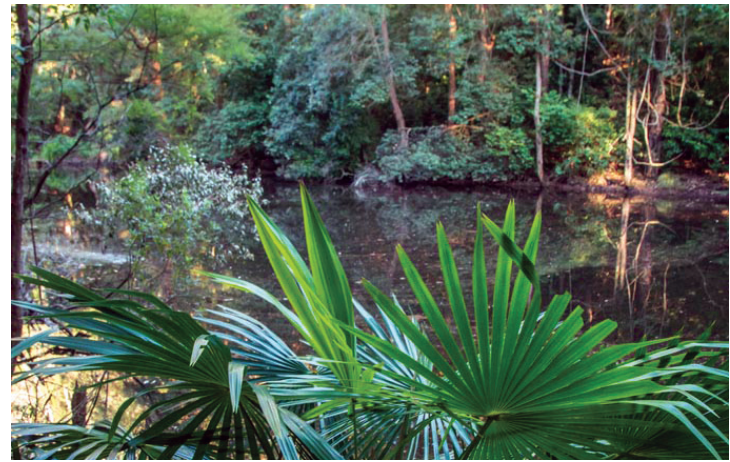
Ecology

Concerns were raised regarding the environmental outcomes for upland swamps and other sensitive environmental features within the Application Area.



Results of the technical review on the ecology

A biodiversity impact assessment was undertaken to determine the potential impacts of the Revised Project on biodiversity values.



The assessment indicated that as a result of the proposed mining method, the Revised Project has removed the risk of subsidence-related damage to sensitive environmental features within the Application Area such as the Cataract River, Cataract Creek and Bellambi Creek, coastal upland swamps as well as rocky outcrops and cliffs. As such, threatened species occupying these sensitive environments (including Prickly Bush-Pea, Giant Burrowing Frog, Red Crowned Toadlet and the Giant Dragonfly) are considered at negligible risk of impact. Additionally, the Revised Project will result in imperceptible impacts to surface water flows and water quality within aquatic environments and therefore negligible impacts are anticipated to the habitat of threatened fish species as a result of mining operations. There is also no proposed change to the disturbed footprint at the surface facilities.



Ecology related control measures

- Mine design changes to minimise subsidence will remove the risk to the sensitive environmental features (creeks, upland swamps and rocky outcrops and cliffs).
- Wollongong Coal will continue to monitor and manage impacts to biodiversity values in accordance with the current Biodiversity Management Plan (2018), including a revised Upland Swamp Management Plan.

Economics

Participants felt that the Revised Project may bring more jobs to the area and opportunities for local businesses. There was some concern, however, that some jobs may be filled from outside the region.



Results of the economic assessment

An Economic Assessment was undertaken which estimated the net benefits of the Revised Project to the State as well as to the Wollongong local area. This assessment comprised a Cost Benefit Analysis and a Local Effects Analysis.

It is estimated that the Revised Project will have a net benefit to NSW of approximately \$170 million in net present value (NPV) consisting of \$113.9 million in direct benefits to the State, \$56.1 million in indirect benefits and indirect costs of \$17,850.

The Revised Project will also provide a net benefit of approximately \$30.6 million in NPV terms to the Wollongong local area consisting mainly as economic benefits of \$21.3 million to employees and \$6.7 million to suppliers in the local area.

The revenue, expenditure and employment associated with the operation of the Revised Project will stimulate economic activity in the Wollongong local economy as well as for the broader NSW economy.

With the implementation of the management, mitigation and control measures proposed by Wollongong Coal, it is considered that the Revised Project will result in a substantial net benefit to the local community in the Wollongong area and NSW.



Wollongong Coal in the community

Originally known as South Bulli, Russell Vale Colliery is one of the oldest operating coal mines in Australia, with its origins dating back to 1887. Wollongong Coal is an important part of the community in which it operates and takes pride in the partnerships it develops and the benefits it delivers.

Wollongong Coal is committed to constructively engaging with the local community. Community engagement activities, including key stakeholders and local resident meetings and information sessions, are designed to provide an opportunity to share information about the company's current and planned projects and operations.

Wollongong Coal strives to create opportunities for ongoing growth and development, whether through contributions to charities, sponsorship of local groups and organisations or employment opportunities. The Revised Project will further enable Wollongong Coal to invest in the locality and the broader Illawarra region.

Over the past 3 years Wollongong Coal has supported the following organisations and activities:

- One Door Mental Health's Light & Hope Clubhouse
- Sponsoring 100 children to attend KidzWish Children's Christmas Party
- Fundraising for technology upgrades at Russell Vale Primary School
- Sponsoring 20 special-needs children to attend a local 'World Festival of Magic' show via the Lion's Club of Woonona
- Provision of swimming lessons for underprivileged children at McKeon's Swim School, Unanderra
- Playground refurbishment at Vista Park, Wongawilli
- Provided space and refurbishment for The Little Pre-School at Wongawilli
- Jerseys for the Wollongong University Football Club
- Donation of money, iPads and books for The Little School Preschool, West Dapto
- Donation of money, grocery vouchers and books to Bellambi Neighbourhood Centre
- Working Bee at Aspect South Coast School, Corrimal
- Collaboration between Jindal University India and Wollongong University.

Thank you

We would like to take the opportunity to thank all community members who have participated in the program so far and look forward to your further input and feedback as the Revised Project progresses.



Would you like more information?

If you would like to know more about the Revised Project, or would like to discuss any aspect of the environmental or social impact assessment with members of the project team, please contact Umwelt or Wollongong Coal using the contact details below.



Damian Vanderwolf
Senior Social Consultant

e. social-team@umwelt.com.au
t. 1300 793 267
m. 0436 639 384
w. www.umwelt.com.au



Mitch Jakeman
CEO, Wollongong Coal

e. mjakeman@wcl.net.au
t. (02) 4223 6830
w. <http://wollongongcoal.com.au>