



# Report

## WONGAWILLI COAL NOISE COMPLIANCE MONITORING MARCH 2018

WONGAWILLI COAL

Job ID. 20770

19 December 2018

**PROJECT NAME:** Wongawilli Coal Noise Compliance Monitoring  
March 2018

**JOB ID:** 20770

**DOCUMENT CONTROL NUMBER** ACO-NW-001-20770

**PREPARED FOR:** Wongawilli Coal

**APPROVED FOR RELEASE BY:** A. McKenzie

**DISCLAIMER & COPYRIGHT:** This report is subject to the copyright statement located at [www.pacific-environment.com](http://www.pacific-environment.com) © Pacific Environment Operations Pty Ltd ABN 86 127 101 642

DOCUMENT CONTROL			
VERSION	DATE	PREPARED BY	REVIEWED BY
01 Draft	29.03.2018	Kyle Topfer / C. Phillips	A. McKenzie
02 Final	19.12.2018	A. McKenzie	

Pacific Environment Operations Pty Ltd: ABN 86 127 101 642

#### ADELAIDE

The Hub  
5 Peel Street  
Adelaide, SA 5000  
Ph: +61 8 8332 0960

#### PERTH

Level 18, 140 St Georges Terrace,  
Perth, WA 6000  
Ph: +61 8 9481 4961  
Fax: +61 2 9870 0999

#### BRISBANE

Level 4, 201 Leichardt Street  
Spring Hill, Qld 4000  
GPO Box 1677, Brisbane, QLD 4001  
Ph: +61 7 3004 6400  
Fax: +61 7 3844 5858

#### SYDNEY HEAD OFFICE

Level 15, 309 Kent Street,  
Sydney, NSW 2000  
Ph: +61 2 9870 0900  
Fax: +61 2 9870 0999

#### MELBOURNE

Level 6, 99 King Street  
Melbourne, Vic 3000  
Ph: +61 3 9111 0021  
Fax: +61 2 9870 0999

## DISCLAIMER

Pacific Environment acts in all professional matters as a faithful advisor to the Client and exercises all reasonable skill and care in the provision of its professional services.

Reports are commissioned by and prepared for the exclusive use of the Client. They are subject to and issued in accordance with the agreement between the Client and Pacific Environment. Pacific Environment is not responsible for any liability and accepts no responsibility whatsoever arising from the misapplication or misinterpretation by third parties of the contents of its reports.

Except where expressly stated, Pacific Environment does not attempt to verify the accuracy, validity or comprehensiveness of any information supplied to Pacific Environment for its reports.

Reports cannot be copied or reproduced in whole or part for any purpose without the prior written agreement of Pacific Environment.

Where site inspections, testing or fieldwork have taken place, the report is based on the information made available by the client or their nominees during the visit, visual observations and any subsequent discussions with regulatory authorities. The validity and comprehensiveness of supplied information has not been independently verified and, for the purposes of this report, it is assumed that the information provided to Pacific Environment is both complete and accurate. It is further assumed that normal activities were being undertaken at the site on the day of the site visit(s), unless explicitly stated otherwise.

## CONTENTS

1	INTRODUCTION	1
2	OBJECTIVES	1
3	REFERENCE DOCUMENTS	1
4	NOISE CRITERIA	1
4.1	Colliery Noise	1
4.2	Rail Spur Noise	3
5	NOISE MONITORING LOCATIONS	3
6	PROJECT OPERATIONS	5
7	MEASUREMENT METHODOLOGY	5
7.1	Operational Noise	5
7.2	Rail Noise	6
8	MONITORING RESULTS	7
8.1	Colliery Operational Noise	7
8.2	Rail Spur Noise	12
9	DISCUSSION	12
9.1	Operational Colliery Noise	12
9.2	Rail Spur	13
10	STATEMENT OF COMPLIANCE	13
11	CONCLUSION	13
	APPENDIX A	15
	Appendix A – Glossary Of Terms	16

## 1 INTRODUCTION

Wollongong Coal Limited (Wollongong Coal) (formerly Gujarat NRE FCGL Pty Ltd) mining operations at NRE Wongawilli Colliery – Nebo Area Project (the Project) are subject to the conditions of the Project Approval, application number 09\_0161 (The Project Approval). Tables 3 and 4 in Schedule 4 of the Project Approval set out the applicable noise limits.

Section 8 of the Project Approval requires a Noise Management Plan to be prepared. This management plan was prepared by Wollongong Coal in July 2016 (reference WWC EC PLN 007).

Section 5.1 of the Noise Management Plan (NMP) states that WCL proposes to undertake quarterly attended monitoring to determine compliance with the criteria. It is noted that two additional monitoring site are identified in the NMP than outlined in the Project Approval, these sites are related to rail noise.

Attended measurements are to be taken over a 15-minute period using Type-1 Sound Level Meters with consideration to the *NSW Industrial Noise Policy* (INP) (EPA 2000) and Australian Standard AS 1055 *Acoustics – Description and Measurement of Environmental Noise*.

This document describes the results of quarterly compliance noise measurements carried out on 8<sup>th</sup> and 9<sup>th</sup> March 2018.

Rail noise monitoring undertaken on 8<sup>th</sup> of March 2018 is also described in this document.

## 2 OBJECTIVES

The objective of the compliance noise monitoring was to assess compliance of Wongawilli Colliery (the Project) with the relevant noise limit conditions of the Project Approval.

## 3 REFERENCE DOCUMENTS

The following documents have been considered as part of the compliance noise monitoring:

- NRE Wongawilli Colliery Project Approval No. 09\_0161
- NRE Wongawilli Colliery Environmental Protection Licences No. 1087 and 12442
- NRE Wongawilli Colliery Nebo Area Environmental Assessment (ERM Report 0097271s)
- NRE Wongawilli Colliery Noise Management Plan (WWC EC PLN 007, July 2016)
- NSW Environmental Protection Agency – Industrial Noise Policy (INP) (EPA 2000)
- NSW Environmental Protection Agency – Rail Infrastructure Noise Guideline (EPA 2013)
- Australian Standard AS 1055:1997 –Acoustics – Description and Measurement of Environmental Noise.
- Australian Standard AS 2377:2002 –Acoustics – Methods for the measurement of Railbound Vehicle Noise.

## 4 NOISE CRITERIA

### 4.1 Colliery Noise

The relevant noise criteria are contained within Tables 3 and 4 of the Project Approval. These tables are reproduced in Table 4.1 and Table 4.2. The locations of the nominated receiver locations are presented in Figure 5.1.

The Project Approval states both intrusive and amenity criteria, which are respectively assessed over a 15 minute period for the day, evening and night time assessment periods.

It is considered that the intrusive criteria, being both lower and assessed over a shorter time period, are more stringent and therefore the limiting criteria to determine compliance for the Project.

**Table 4.1: Noise Criteria dB(A) –Intrusive noise limits as defined in Table 3 of the Project Approval**

Receiver Number	Day	Evening	Night	
	L <sub>Aeq</sub> (15min)	L <sub>Aeq</sub> (15min)	L <sub>Aeq</sub> (15min)	L <sub>A1</sub> (1min)
RA1	43	43	43	59
RA2	44	43	43	60
RA3	40	40	38	48
All other existing residential receivers	40	40	38	48

Note: Day is defined as 7.00am to 6.00pm, evening as 6.00pm to 10.00pm and night as 10.00pm to 7.00am.

**Table 4.2: Noise Criteria dB(A) – Amenity Noise Limits as defined in Table 4 of the Project Approval**

Receiver Area	Day	Evening	Night
	L <sub>Aeq</sub> (11hr)	L <sub>Aeq</sub> (4hr)	L <sub>Aeq</sub> (9hr)
All privately-owned land	60	50	45

Notes to Tables 4.1 and 4.2:

- To interpret the locations, see Appendix 4 of the Project Approval.
- Noise generated by the project is to be measured in accordance with the relevant requirements, and exemptions (including certain meteorological conditions) of the INP.

Further to these conditions, the Project Approval outlines a range of noise goals to be considered with the objective of reducing future noise levels from the Project. These noise goals are presented in Table 4.3.

**Table 4.3: Noise Criteria dB(A) – Intrusive noise goals as defined in Table 5 of the Project Approval**

Receiver Number	Day	Evening	Night	
	L <sub>Aeq</sub> (15min)	L <sub>Aeq</sub> (15min)	L <sub>Aeq</sub> (15min)	L <sub>A1</sub> (1min)
RA1	40	40	38	51
RA2	40	40	38	51
RA3	40	40	38	48
All other existing residential receivers	40	40	38	48

Notes:

- To interpret the locations, see Appendix 4 of the Project Approval.
- Noise generated by the project is to be measured in accordance with the relevant requirements, and exemptions (including certain meteorological conditions), of the INP.
- The noise goals in Table 5 may be varied by way of direction to the Proponent by the Secretary, following consideration of the results of the noise audit required under condition 7 of the Project Approval.

## 4.2 Rail Spur Noise

The relevant noise criteria are contained within Table 6 of the Project Approval, and reproduced in Table 4.4.

**Table 4.4: Noise Criteria dB(A) –Rail Noise Limits**

Receiver Area	Day (7am – 10pm)	Night (10pm – 7am)
	L <sub>Aeq</sub> (15hr)	L <sub>Aeq</sub> (period)
All existing residential receivers	65	60

The Project Approval notes that these noise criteria do not apply if the Proponent has an agreement with the relevant owner/s of the residence or land to generate higher noise levels, and the Proponent has advised the Department in writing of the terms of this agreement.

Furthermore, by the end of July 2013, or other timing as may be agreed by the Secretary, the Proponent shall use its best endeavours to ensure that its rail spur is only accessed by:

- Locomotives that are approved to operate on the NSW rail network in accordance with noise limits L6.1 to L6.4 in RailCorp's EPL (No. 12208); and
- Trains comprising no less than 30 wagons.

In addition, the Proponent shall restrict train speeds on the Wongawilli rail spur to a maximum of 20 km/h.

## 5 NOISE MONITORING LOCATIONS

With consideration to the requirements of the Project Approval and the NMP, noise monitoring locations are summarised in Table 5.1 and Figure 5.1.

**Table 5.1: Noise Monitoring Locations**

Receiver Area Number	Description	Coordinates (MGA zone 56H)	
		Easting	Northing
RA1 a	30 Vista Parkway	293868	6183146
RA1 b	111 Smiths Lane	294095	6183327
RA2 a	18 Wongawilli Rd	294622	6182498
RA2 b	1 Wongawilli Rd	294225	6182572
RA3 a	80 Shone Ave	294884	6181794
RA3 b	Jersey Farm	294108	6181565
RA4 a	66 Ritchie Crescent	296299	6182088
RA4 b	61 Huxley Drive	296430	6182008

The rail noise monitoring location utilised during December 2017 monitoring is indicated in Figure 5.2. Monitoring was undertaken at 61 Huxley Drive, Horsley, 2530.



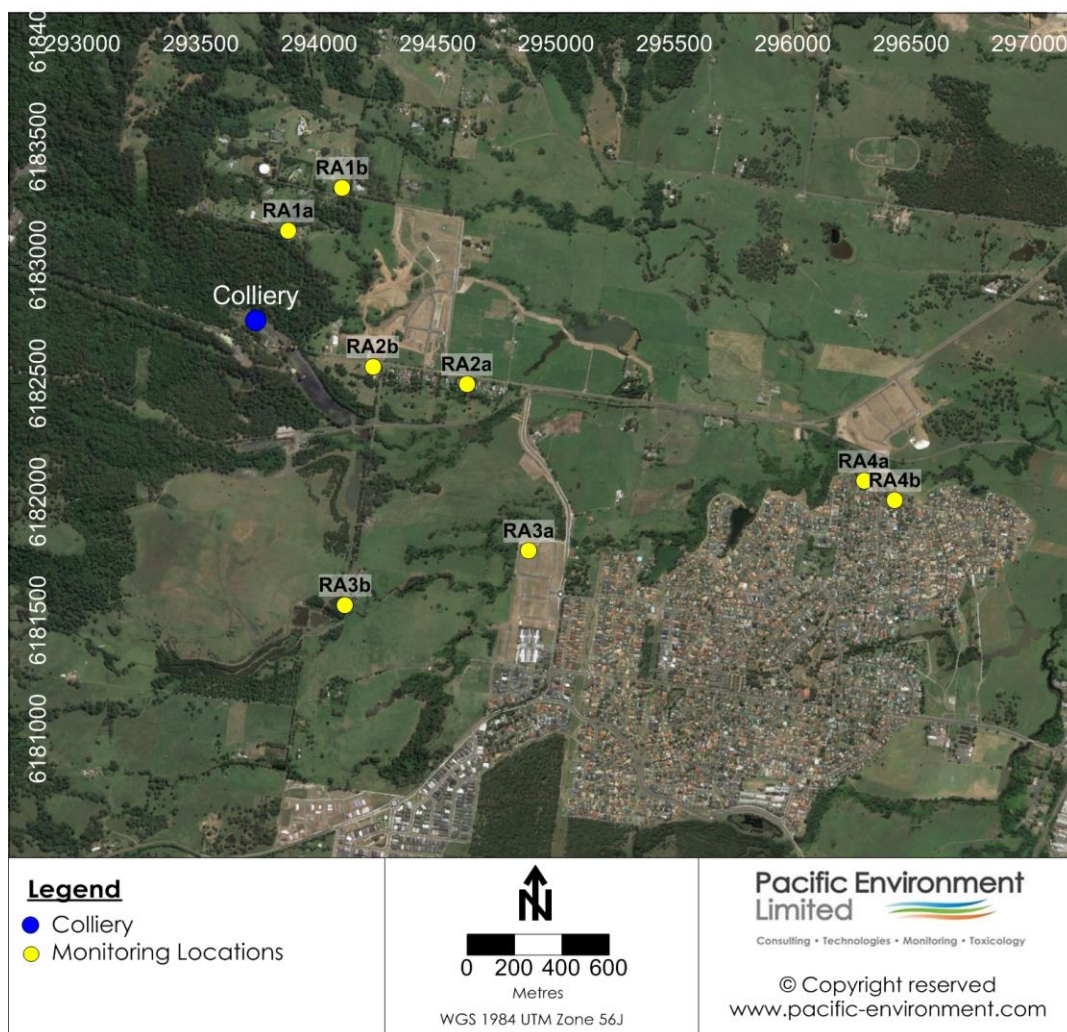


Figure 5.1: NMP Monitoring Locations



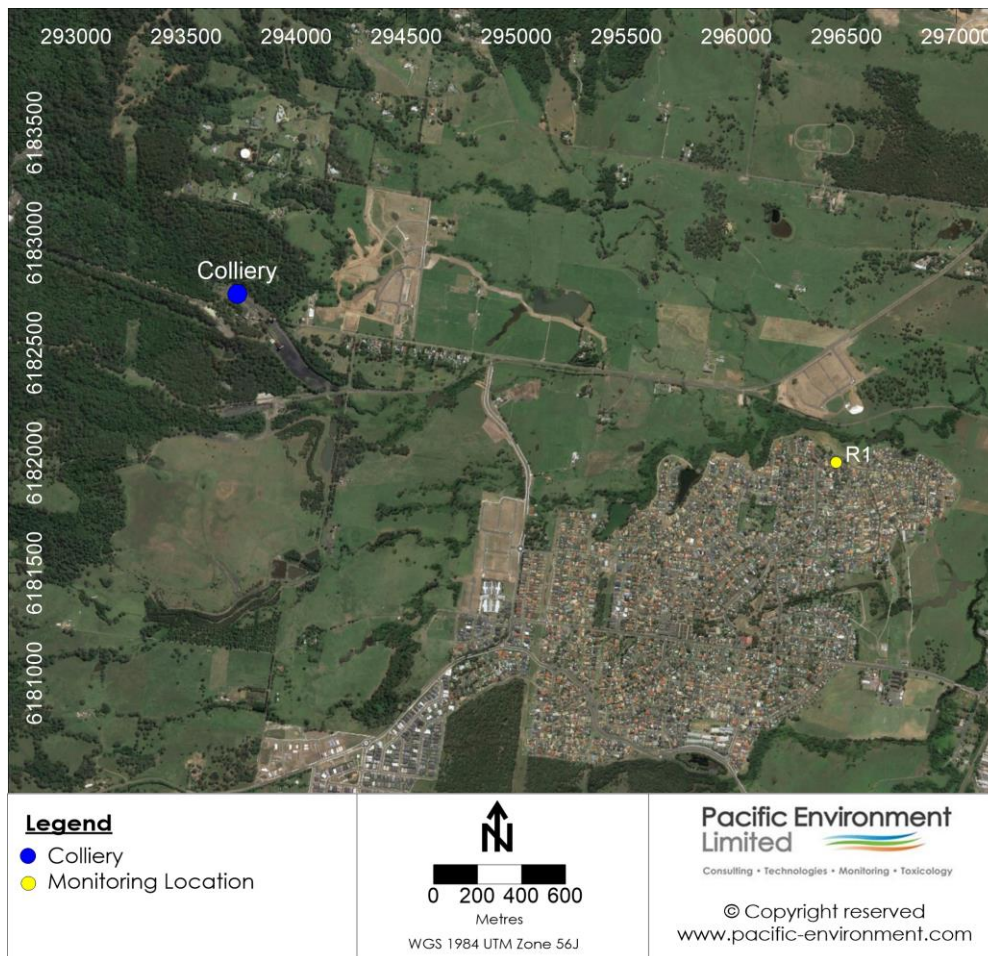


Figure 5.2: Rail Noise Monitoring Location

## 6 PROJECT OPERATIONS

Project operations were observed during the measurement period to include underground operations and product loadout. Fixed mechanical plant operating included continuous operation of:

- Syntron in the Transfer House at Pit Top,
- Screen and sizer building operation,
- Conveyor and conveyor drive head operation.

During the day time period loading of coal into trains also occurred. Mobile plant was operating in the stockpile area.

## 7 MEASUREMENT METHODOLOGY

Attended noise compliance measurements were carried out with reference to the NSW INP (EPA, 2000) and Australian Standard AS 1055:1997. Rail noise measurements were completed with consideration to Australian Standard AS 2377:2002 and the NSW EPA Rail Infrastructure Noise Guideline (2013).

### 7.1 Operational Noise

15-minute operator attended measurements were carried out at the 6 receiver locations nominated in the Project Approval and shown in Table 4.1, during the day, evening and night periods.

The meteorological conditions were observed during attended noise monitoring. Monitoring data collected at the project's automatic weather station (AWS) was also reviewed to confirm observations. Wind conditions were estimated onsite using an anemometer. The potential for temperature inversions to be present was estimated using the sigma-theta method (Appendix E4 of the INP) using data from the on-site AWS. Stability classes of F or G are considered to be indicative that strong temperature inversions are present.

Measurements were carried out on 8<sup>th</sup> and 9<sup>th</sup> March 2018 utilising two NTi Audio XL2 type 1 Sound Level Meters (serial numbers A2A-06883-E0 and A2A-06981-E0). Calibration was checked before and after measurements using a Pulsar Instruments Model 105 acoustic calibrator (serial number 55095). No significant drift ( $\pm 0.5$  dB) was noted.

The weather conditions were observed to be generally suitable for noise monitoring and in accordance with those specified in the Project Approval. The meteorological conditions observed during the noise monitoring were generally satisfactory for noise monitoring, with no inversion conditions identified.

Operator attended measurements quantified the contribution from the Project using a combination of measured levels, onsite observations and third octave frequency analysis, where appropriate.

For the determination of compliance, Section 11.1.3 of the NSW INP states the following:

*A development will be deemed to be in non-compliance with noise consent or licence condition if the monitored noise level is more than 2 dB above the statutory noise limit specified in the consent or licence condition.*

Therefore non-compliance will be reported where the noise level from the Project is determined to be at least 2 dB above the nominated criteria.

Where applicable, adjustments have been made for annoying characteristics such as tonality, impulsiveness and low frequency noise as defined in the INP.

The  $L_{A1,15min}$  represents the level exceeded for 1% of the measurement time. In this case, 1% of the measurement time is 9 seconds. It is considered that the  $L_{A1}$  in addition to the  $L_{Amax}$  of the measurement are taken into account in addition to observed levels to provide an indication of short duration high noise level events that contribute to the potential for sleep disturbance.

## 7.2 Rail Noise

Unattended measurements were carried out between 8<sup>th</sup> and 12<sup>th</sup> of March 2018, utilising Pacific Environment's NTi Audio Sound Level Meter. Continuous sound pressure level data was collected over the monitoring interval. The unattended logger was located in the front garden of 61 Huxley Drive, Hoxton Park approximately 150m from the rail line.

Attended measurements were carried out on 8<sup>th</sup> of March 2018, utilising two Pacific Environment NTi Audio Sound Level Meter. The attended measurements were taken in the front garden area of 61 Huxley Drive, Hoxton park (approximately 150m from the rail line) and in Karrara Park at RA4a (approximately 100m from the rail line).

Train passby events were identified in the collected data, then post processed to calculate passby sound exposure levels (SEL) for each event. Period noise levels were calculated from the event SELs.

Where identified in the collected audio data, extraneous noise was removed from the passby event.

The meteorological conditions observed during the unattended and attended noise monitoring were generally satisfactory for noise monitoring.

## 8 MONITORING RESULTS

### 8.1 Colliery Operational Noise

The results of the operator attended measurements are presented in Table 8.1 for  $L_{Aeq,15min}$  criteria and Table 8.2 for  $L_{A1,1min}$  criteria. All values are in dB(A). Data heavily affected by insect noise has been filtered.

Table 8.1: Attended Measurement Results (L<sub>Aeq</sub> Noise Levels)

Receiver	Time	Period	Criteria L <sub>Aeq,15min</sub> dB(A)	Weather	Measured Noise Level L <sub>A,n,15min</sub> dB(A)			Estimated Contribution from Project L <sub>Aeq,15min</sub> dB(A)	Complies	Notes
					L <sub>Aeq</sub>	L <sub>A10</sub>	L <sub>A90</sub> <sup>1</sup>			
RA1a	9/03/2018 11:41	Day	43	Calm	52	56	45	<35	Yes	Insect noise, construction tools @ 52-63, machinery @ 59-63, loud truck in the distance @ 67. Site inaudible.
RA1b	9/03/18 11:45	Day	43	Calm	48	52	40	<33	Yes	Tree mulcher @ 47 & 55-58. Nearby construction, engine noise, reserve skwarker @ 40-43. Birds chirping @ 56. Site inaudible.
RA2a	8/03/18 17:42	Day	44	1-1.5m/s E wind.	61	61	46	<36	Yes	Background highway noise @ 48-51. Loud car passbys @ 71-75. Dog bark nearby @ 56. Site inaudible, estimated contribution less than 40dB(A).
RA2b	8/03/18 17:19	Day	44	Calm	57	59	42	<32	Yes	Traffic nearby constant, insects, birds, dogs @ 55. Car stopped & yelled @ 74. Residents walking past talking @ 61. Loud motorbike & several cars @ 61-78. Site inaudible, estimated contribution less than 40dB(A).
RA3a	9/03/2018 11:14	Day	40	1-1.5m/s NE wind, light rain.	46	48	37	<33	Yes	Birds @ 53-58, nearby construction @ 43-53, Piling noises @ 59. Site inaudible.
RA3b	8/03/18 17:19	Day	40	Calm	49	50	46	<36	Yes	Insect noise, birds, dog bark, distant resident music @ 45-48. Car passby @ 50, motorbike @ 51. Overhead birds chirping @ 52. Site inaudible.
RA4a	8/03/2018 16:40	Day	40	Moderate 3-5m/s NE wind.	44	45	40	<33	Yes	Children playing in park @ 48, birds @ 50-58, dog barking @ 60, aircraft overhead @ 52. Site inaudible.
RA4b	8/03/18 16:40	Day	40	Calm	62	64	38	<32	Yes	Insect noise, birds, distant traffic @ 38-40. Birds chirping @ 44-47. Car passbys @ 80, 82, 79 & 70. Site inaudible.

Notes: All noise levels are rounded to the nearest whole decibel.

<sup>1</sup> values exceeding the adopted criteria are indicated in bold font.

Receiver	Time	Period	Criteria L <sub>Aeq,15min</sub> dB(A)	Weather	Measured Noise Level L <sub>An,15min</sub> dB(A)			Estimated Contribution from Project L <sub>Aeq,15min</sub> dB(A)	Complies	Notes
					L <sub>Aeq</sub>	L <sub>A10</sub>	L <sub>A90</sub> <sup>1</sup>			
RA1a	08/03/2018 21:46	Eve	43	Calm	47(44)	48	45(42)	<42	No	Insect noise, rumbling industrial noise @ 46-48, resident talking nearby @ 60, increase in industrial noise @ 47-49. Site audible.
RA1b	08/03/2018 21:50	Eve	43	Calm	51(42)	54	45(39)	<39	Yes	Insect noise, rumbling industrial @ 45. Site audible.
RA2a	08/03/18 18:11	Eve	44	Calm	62	63	48	<38	Yes	Insect noise, distant traffic @ 49. Residents walking past @ 53. Loud car passby @ 79 – 81. Site inaudible, estimated contribution less than 38 dB(A).
RA2b	08/03/18 18:15	Eve	44	Calm	56	58	43	<36	Yes	Insects, birds, distant traffic, residents talking @ 42-45. Person clapping walking past @ 73. Drilling on house @ 54. Dog bark @ 51. Car passbys @ 77. Site inaudible, estimated contribution less than 36 dB(A).
RA3a	08/03/2018 18:41	Eve	40	1 m/s E wind	43	44	33	<30	Yes	People talking, insects, distant traffic @ 42-45. Person walking past @ 48. Birds @ 48. Children playing @ 54. Site inaudible, estimated contribution less than 30 dB(A).
RA3b	08/03/2018 18:35	Eve	40	Calm to 1 m/s E wind	54	55	50	<38	Yes	Insect noise @ 51-54. Car idled nearby @ 53-58. Dog bark @ 54. Plane overhead @ 56. Site inaudible, estimated contribution less than 38 dB(A).
RA4a	08/03/2018 20:50	Eve	40	Calm	48	47	42	<33	Yes	Insect noise, birds, distant highway @ 42-44. Train horn in distance @ 51, aircraft overhead @ 51, loud birds @ 62, dog in background @ 42-52. Site inaudible, estimated contribution less than 33 dB(A).
RA4b	08/03/2018 19:13	Eve	40	1 m/s E wind	58	62	39	<34	Yes	Insect noise, birds, distant traffic @ 38-41. Truck & bus passby @ 77. Dog bark @ 60. Car horn @ 78. Traffic passbys @ 68. Site inaudible, estimated contribution less than 34 dB(A).

Notes: All noise levels are rounded to the nearest whole decibel.

<sup>1</sup> values exceeding the adopted criteria are indicated in bold font.

<sup>2</sup> Numbers in brackets () exclude insect noise.

Receiver	Time	Period	Criteria L <sub>Aeq,15min</sub> dB(A)	Weather	Measured Noise Level L <sub>An,15min</sub> dB(A)			Estimated Contribution from Project L <sub>Aeq,15min</sub> dB(A)	Complies	Notes
					L <sub>Aeq</sub>	L <sub>A10</sub>	L <sub>A90</sub> <sup>1</sup>			
RA1a	08/03/2018 22:05	Night	43	Calm	47(44)	48	45(42)	<42	Yes	Insect noise, frogs, industrial noise @ 45-48. Site audible.
RA1b	08/03/2018 22:12	Night	43	Calm	51(43)	54	45(40)	<40	Yes	Insect noise, distant industrial @ 44-45. Site audible.
RA2a	08/03/2018 23:01	Night	43	Calm	54	47	41	<41	Yes	Insects, distant industrial @ 42. Car passby @ 78-81. Site audible, estimated contribution less than 41 dB(A).
RA2b	08/03/2018 22:41	Night	43	Calm	48(47)	48	46(43)	<43	Yes	Insects, distant industrial @ 47. Car passbys at 62-63. Site audible.
RA3a	08/03/2018 23:25	Night	38	Calm	45(38)	46	43(28)	<28	Yes	Distant traffic, insects, faint industrial @ 45-47. Distant truck takeoff @50. Site audible.
RA3b	08/03/2018 22:46	Night	38	Calm	52(40)	56	47(37)	<37	Yes	Insects, distant traffic, industrial noise @ 48-50. Aircraft overhead @ 51-59. Distant car @ 57. Site audible.
RA4a	09/03/2018 00:31	Night	38	Calm	45	49	40	<36	Yes	Insects, distant cars, cow mooing regularly @ 40-45. Loud cow moo @ 50. Nearby car noise @ 47-52. Car startup @ 51. Site inaudible, estimated contribution less than 36 dB(A).
RA4b	09/03/2018 00:38	Night	38	Calm	48	39	32	<32	Yes	Insects, distant traffic @ 35. Car door slam & car start in distance @ 38-39. Train horn in distance @ 47. Cars passby @ 64-69. Site inaudible, estimated contribution less than 32 dB(A).

Notes: All noise levels are rounded to the nearest whole decibel.

1 values exceeding the adopted criteria are indicated in bold font.

2 Numbers in brackets () exclude insect noise.



**Table 8.2: Attended Measurement Results (Sleep Disturbance)**

Receiver	Criteria $L_{A1,1min}$ dB(A)	Measured Levels $L_{A1,1min}$ dB(A) $L_{A1}$	Estimated Contribution from Project $L_{A1,1min}$	Complies	Notes
RA1a	59	46	<46	Yes	Site source generally steady state mechanical noise, no detectable peak events. Measured peaks not site related.
RA1b	59	46	<45	Yes	Site source generally steady state mechanical noise, no detectable peak events. Measured peaks not site related.
RA2a	60	44	<34	Yes	Site source generally steady state mechanical noise, no detectable peak events. Measured peaks not site related.
RA2b	60	50	<40	Yes	Site source generally steady state mechanical noise, no detectable peak events. Measured peaks not site related.
RA3a	48	51	<41	Yes	Site source generally steady state mechanical noise, no detectable peak events. Measured peaks not site related.
RA3b	48	48	<38	Yes	Site source generally steady state mechanical noise, no detectable peak events. Measured peaks not site related.
RA4a	48	47	<37	Yes	Site source generally steady state mechanical noise, no detectable peak events. Measured peaks not site related.
RA4b	48	40	<30	Yes	Site source generally steady state mechanical noise, no detectable peak events. Measured peaks not site related.

Notes: All noise levels are rounded to the nearest whole decibel.

## 8.2 Rail Spur Noise

The results of the unattended rail noise measurements at rail receiver location R1 are presented in Table 8.3 for  $L_{Aeq}$  period criteria. All values are in dB(A).

Rail operations during monitoring included a locomotive pass by event (full coal export).

**Table 8.3: Rail Noise events ( $L_{Aeq}$  Noise Levels) – Unattended Measurements**

Location	Date	Time (hh:mm) (AEDST)	Duration	LAE <sup>1</sup>	Rail Noise Level $L_{Aeq}$ period	Criteria	Complies
R1	08/03/2018	16:17:29	352	92	45 $L_{Aeq}$ 15hr	65	Yes
R1	09/03/2018	07:05:41	254	87	39 $L_{Aeq}$ 15hr	65	Yes
R1	09/03/2018	09:05:19	333	95	48 $L_{Aeq}$ 15hr	65	Yes
R1	09/03/2018	12:18:30	243	87	40 $L_{Aeq}$ 15hr	65	Yes
R1	09/03/2018	13:59:30	257	87	39 $L_{Aeq}$ 15hr	65	Yes
R1	10/03/2018	07:28:04	265	85	37 $L_{Aeq}$ 15hr	65	Yes
R1	10/03/2018	09:55:58	364	91	44 $L_{Aeq}$ 15hr	65	Yes
R1	10/03/2018	12:52:22	255	87	39 $L_{Aeq}$ 15hr	65	Yes
R1	10/03/2018	14:53:13	288	91	43 $L_{Aeq}$ 15hr	65	Yes

Notes: Rail noise levels are corrected to a façade level (+2.5 dB) All results are rounded to 1 dB.

1: LAE is sound exposure level for each individual passby event is the measured free field noise level.

The results for the attended rail noise measurements at rail receiver location RA4a & RA4b are presented in Table 8.4.

**Table 8.4: Rail Noise events ( $L_{Aeq}$  Noise Levels) – Attended Measurements**

Location	Date	Time (hh:mm) (AEDST)	Duration	LAE <sup>1</sup>	Rail Noise Level $L_{Aeq}$ period	Criteria	Complies
RA4a	08/03/2018	15:19:34	367	85	37 $L_{Aeq}$ 9hr	65	Yes
RA4b	08/03/2018	15:23:54	271	90	45 $L_{Aeq}$ 15hr	65	Yes

Notes: Rail noise levels are corrected to a façade level (+2.5 dB) All results are rounded to 1 dB.

1: LAE is sound exposure level for each individual passby event is the measured free field noise level.

## 9 DISCUSSION

### 9.1 Operational Colliery Noise

The Project was inaudible during the daytime period at all locations.

The Project was audible during the evening period at sites RA1a & RA1b only.

The Project was audible during the night period at site RA1a, RA1b, RA2a, RA2b, RA3a & RA3b.

Site noise levels during the night time periods were found to be below the relevant sleep disturbance limits for all locations, where identified.

During the night time period, no short duration high noise level events were identified. No annoying characteristics were observed during measures which would trigger the application of modifying factors as defined in Chapter 4 of the INP.

## 9.2 Rail Spur

Measured rail noise levels at 61 Huxley Drive, Hoxton Park were below the day time noise limit of 65 dB(A), whilst there were no night time rail movements for monitoring undertaken between 8<sup>th</sup> and 12<sup>th</sup> March 2018.

Measured rail noise levels at RA4a & RA4b monitoring locations were below the day time noise limit of 65 dB(A) for attended monitoring undertaken on 8<sup>th</sup> March 2018, whilst there were no night time rail movements during the monitoring period.

## 10 STATEMENT OF COMPLIANCE

Pacific Environment has completed operational noise compliance monitoring for Wongawilli Colliery. Measurements were completed at eight (8) locations representative of residential areas (RA1 to RA4), and demonstrated that measured noise levels are below relevant noise limits for all periods.

Project operations were inaudible at all locations during the day.

Project operations were audible during the evening time period at site RA1a & RA1b only.

Project operations were audible during the night time period at site RA1a, RA1b, RA2a, RA2b, RA3a & RA3b.

Maximum site noise levels remained below the relevant sleep disturbance limits for all locations.

No annoying impulsive, low frequency or tonal characteristics were observed from the Project at all monitoring locations.

Rail noise levels at 61 Huxley Drive, Hoxton Park were within the day time rail noise limit of  $L_{Aeq}$  65 dB(A) (7am to 10pm) and night time rail noise limit of  $L_{Aeq}$  60 dB(A) (10pm to 7am).

## 11 CONCLUSION

Pacific Environment conducted operational compliance noise monitoring at Wongawilli Colliery on 8<sup>th</sup> and 9<sup>th</sup> March 2018 during typical operations. This involved the completion of attended noise measurements at eight (8) locations during the day, evening and night periods as required by the Project Approval.

The assessment was conducted according to current guidelines, standards and assessment methods.

The compliance monitoring found that the Project is operating within its required noise limits. Project operations were audible only at some locations during the evening and night time periods. Measured noise levels at the identified sites were found to be within relevant operational limits.

No annoying impulsive, low frequency or tonal characteristics were observed from the Project at locations.

Maximum site noise levels during the night time periods were found to be below the relevant sleep disturbance limits for all locations, where identified.

Unattended rail noise measurements were carried out between 8<sup>th</sup> and 12<sup>th</sup> March 2018 at 61 Huxley Drive, Hoxton Park.

Measured rail noise levels at 61 Huxley Drive, Hoxton Park were below the day time noise limit of 65 dB(A) whilst there were no night time rail movements during the monitoring period.

Attended rail noise measurements were carried out on 8<sup>th</sup> of March 2018 at RA4a & RA4b monitoring locations.

Measured rail noise levels at RA4a & RA4b were below the day time noise limit of 65 dB(A).

Therefore compliance has been demonstrated at all monitoring locations for all periods.

---

**Appendix A**

---

## APPENDIX A – GLOSSARY OF TERMS

Term	Description
Adverse weather	Weather conditions that affect noise measurements (wind, rain and temperature inversions) that occur at a particular site for a significant period of time. The maximum wind speed allowed during acoustics measurements are in process is 5m/s. No rain is allowed.
Ambient noise	The all-encompassing noise environment at a given location, made up of many sources in the near and far field.
Assessment period	The period in a day over which assessments are made.
A-weighting	Adjustment made to a noise level based on international standards. Approximates a human's hearing response to frequency at lower sound levels.
Background noise	Background noise is the term used to describe the underlying level of noise present in an area, measured in the absence of any extraneous noise. Typically when measured with a sound level meter is measured statistically as the A-weighted noise level exceeded for ninety percent of a sample period ( $L_{A90,T}$ ).
dB	Decibel, the logarithmic ratio of a given sound pressure to a reference pressure.
dB(A)	A-weighted decibels.
Free-field	A sound field where the effects of reflection are negligible throughout the region of interest.
Frequency	The number of cycles per unit of time. It is measured with cycles per second (cps) or the interchangeable Hertz (Hz). Frequency can be associated as a synonymous to pitch.
Intermittent noise	Level that drops to the background noise level several times during the period of observation.
Heavy vehicle	A truck or other vehicle with either two or three axles, two groups or three or more axles, more than two groups.
Light vehicle	Passenger vehicles (cars, vans, utilities, motorcycles etc.).
$L_{A1,T}$	The noise level exceeded for 1% of the time period, T.
$L_{A10,T}$	The noise level exceeded for 10% of the time period, T.
$L_{A90,T}$	The noise level exceeded for 90% of the time period, T. Commonly referred to as the background noise level.
$L_{Aeq,T}$	The equivalent average noise level of the time period, T. It represents in a single number, the energy of the actual fluctuating noise level over the period.
$L_{Amax,T}$	The maximum noise level measured during the period, T.
RBL	Rating Background Level. The background noise level as defined by the NSW Industrial Noise Policy (EPA, 2000). It is calculated by the taking the median value of the lowest 10th percentile $L_{A90}$ measurements in any day, evening or night period.
Sound Pressure Level (SPL)	Is the difference between the pressure produced by a sound wave and the barometric (ambient) pressure at the same point in space. Typically expressed in decibels, as measured by a standard sound level meter with a microphone.
Sound Power Levels ( $L_w$ )	Ten times the logarithm to the base 10 of the ratio of the sound power of the source to the reference sound power. Typically associated with noise sources.